



Advanced User's Guide

8.VIII.2012 ver. 1.02\beta



Contents

Contents	I
1 Fibaro System - General Information	1
2 The Z-Wave Protocol	3
2.1 Device Types	3
2.2 How the network works	4
2.3 Routing Principles	4
3 Fibaro System Modules	7
3.1 Fibaro Dimmer FGD211	7
3.1.1 Product Characteristics	7
3.1.2 Specifications	8
3.1.3 Example Configuration Parameters	10
3.1.4 Associations	11
3.1.5 Tips and Tricks	12
3.1.6 Wiring Diagrams - Dimmer	13
3.2 Relay Switch 2x1,5kW FGS211	16
3.2.1 Product Characteristics	16
3.2.2 Specifications	16
3.2.3 Example Configuration Parameters	18
3.2.4 Associations	18
3.2.5 Tips and Tricks	19
3.3 Relay Switch 1x3kW FGS211	23
3.3.1 Product Characteristics	23
3.3.2 Specifications	23
3.3.3 Example Configuration Parameters	25
3.3.4 Associations	25
3.3.5 Wiring diagrams - Relay Switch 1x3,0kW	26
3.4 Roller Shutter FGR211	29

3.4.1	Product Characteristics	29
3.4.2	Specifications	29
3.4.3	Roller Shutter Calibration	31
3.4.4	Example Configuration Parameters	31
3.4.5	Associations	31
3.4.6	Connecting Scheme - Roller Shutter	31
3.5	Dimmer Bypass FGB 001	33
3.5.1	Specifications	33
3.5.2	Connecting Scheme - Bypass	34
4	Wireless Z-Wave Sensors	35
4.1	Universal Binary Sensor	36
4.1.1	Specifications	37
4.1.2	Example Configuration Parameters	37
4.1.3	Universal Binary Sensor - Inclusion / Exclusion	39
4.1.4	Wiring Diagrams - Universal Binary Sensor	39
4.2	Danfoss Living Connect Electronic Thermostat	44
4.2.1	Specifications	45
4.2.2	Danfoss Thermostat Inclusion/Exclusion	46
4.2.3	Adapters	47
4.3	Motion Sensor	48
4.3.1	Specifications	48
4.3.2	Everspring Motion Sensor Inclusion/Exclusion	49
4.4	Flood Sensor	50
4.4.1	Specifications	51
4.4.2	Everspring Flood Sensor Inclusion/Exclusion	51
4.5	Temperature and Humidity Sensor	52
4.5.1	Specifications	52
4.5.2	Everspring Temp./Humidity sensor Inclusion/Exclusion	53
4.6	Door / Window Sensor	54
4.6.1	Specifications	55
4.6.2	Aeon Labs D/W Sensor Inclusion/Exclusion	55
4.7	Smoke Detector	56
4.7.1	Specifications	57
4.7.2	Smoke Sensor Inclusion/Exclusion	57
5	Home Center 2	59
5.1	HC2 Finder	59
5.2	Your House	61
5.3	Rooms	62
5.4	Devices	63
5.4.1	Z-Wave Devices Inclusion	63

5.4.2	IP Camera Inclusion	63
5.4.3	Creating Virtual Devices	64
5.4.4	Deleting Devices	66
5.5	Scenes	66
5.5.1	Example Scenes	67
5.6	Linked Devices	68
5.6.1	Linked Devices - Heating	70
5.6.2	Linked Devices - Air Conditioning	71
5.6.3	Linked Devices - Humidity	72
5.6.4	Video Gate	73
5.7	Panels	74
5.7.1	SMS Panel	74
5.7.2	Alarm Panel	76
5.7.3	Heating Panel	78
5.7.4	Heating Panel	79
5.7.5	Humidity Panel	80
5.7.6	History Panel	80
5.7.7	Access Control	81
5.7.8	Notifications Panel	84
5.7.9	Localization Panel	85
5.8	Configuration	86
5.8.1	General	86
5.8.2	LAN Settings	87
5.8.3	Location	89
5.8.4	Backup	90
5.9	Recovery Mode	91
	List of Figures	93

Chapter 1

Fibaro System - General Information

Fibaro is a wireless, intelligent building automation system, based on the Z-Wave communication protocol. Thanks to MESH network topology, Fibaro has certain advantages over competitive solutions, which establish a direct connection between the signals emitter and receiver. In such a situation the radio signal is weakened by any obstacle in its way - walls, furniture etc. Each Fibaro System component serves as a signal emitter and receiver, plus also as a signal repeater. This is the main advantage of the Fibaro System - if establishing a direct connection between devices proves impossible, a connection may be established thanks to the other devices serving as a signal repeaters.

The Fibaro System uses two-way communication between system components. Communications are sent to devices and the devices send back communication confirming the signal's reception. This way each device reports its current state, so that it may be easily determined if a certain action has been performed. Data transmission security in the Fibaro System is comparable to that of wired home automation systems.

Fibaro System uses a Z-Wave certified data transmission radio frequency - e.g. 868,4 MHz in EU. Each individual network gets its own, unique identification number (home ID) which gives the possibility for two or more independent Fibaro Systems to operate in the same building without any interference. Z-Wave wireless communication serves as a certified standard, which assures compatibility for products produced by various manufacturers all over the world. Thanks to that approach Z-Wave technology offers great potential for expansion and further development.

Because Z-Wave intelligent systems work in Mesh topology, where each device (node) serves as a transmitter and receiver. Each device (node) also reports it

state, which enables the central unit to constantly monitor the networks status. Thanks to this technology the Fibaro System creates a dynamic network in which the function and location of each device is constantly monitored, in real time, from the moment the System is started.

Fibaro System modules serve as network nodes. Thanks to Mesh topology, each node not only sends and receives the radio signals, but also serves as a relay for other nodes, i.e. nodes collaborate to propagate the data within the network. Each time nodes change their location, or one of the nodes dies, the network reconfigures itself automatically. This way the Fibaro System devices communicate with each other even in the event of central unit failure, e.g. in case of fire, flooding, etc. Each of the Fibaro System modules are tested and certified for compatibility by the Z-Wave technology owner.



Mesh technology

Chapter 2

The Z-Wave Protocol

The Z-Wave protocol uses 868,4 MHz radio frequency in Europe, 908,4 MHz in USA and 921.4 in AUS/NZ on unlicensed ISM bands. The protocol was launched with 9600 b/s data transmission but it has been raised to 40Kbps. Both versions of the protocol are compatible. Data is transmitted in 8bit blocks, in which the most important bit is always sent first. Each Z-Wave network has its unique ID called HOME ID. In addition, each device gets its own ID - Node ID. Each, newly added device gets two ID numbers - HOME ID and Node ID. Home ID is the same for all devices within the network, while Node ID is unique for a given node. If another controller (secondary master) is added to the network, it gets the same HOME ID as the main controller.

2.1 Device Types

There are two types of devices in the Z-Wave protocol: Master and Slave. There are two types of master devices: Primary and Secondary. There is always one Primary Master Controller in each Z-Wave network, to manage devices inclusion/exclusion and preserve network settings. Secondary Master Controllers copy this data from the Primary Master Controller. In the Fibaro System, the Primary Master Controller is the Home Center 2.

The Secondary Master (secondary) -e.g. remote, or any other device bearing Secondary Master's characteristic. Controllers initiate data transmission within the network. Slaves are devices serving as actors i.e. they perform tasks directed by Master Devices.

2.2 How the network works

Managing network nodes is realized through two types of operation: including/excluding nodes and associating nodes. Including device to the network means creating a new network node, while excluding device means deleting network node. Each Z-Wave network has one Primary Master Controller, able to include/exclude devices (create/delete network node). Other controllers (Secondary Master Controllers) copy the informations from the Primary Master. Adding/deleting node always starts with entering the Primary Master Controller into learning mode and then by activating the device's inclusion. The latter is done by the switch connected to the device, a specially designated switch in the device, or simply by clicking an icon in the system menu (Primary Master Controller's users interface). Once the primary master controller receives information from a new node, the node receives a Home ID (same for each node within the network) and its unique Node ID. Association is a direct link between network nodes, realised without any action from Primary Master Controller.

2.3 Routing Principles

In a typical wireless network the central controller has a direct wireless connection to all of the other networking nodes. This always requires a direct radio link. In case of disturbances the controller does not have any backup route to reach the nodes. However, Z-Wave is a wireless system that offers a very powerful mechanism to overcome this limitation. Z-Wave nodes can forward and repeat messages that are not in direct range of the controller. This gives greater flexibility as Z-Wave allows communication, even though there is no direct wireless connection or if a connection is temporarily not available, due to some change in the room or building.

Z-Wave is able to route messages via up to four repeating nodes. This is a compromise between the network size and stability, and the maximum time a message is allowed to travel in the network. Every node is able to determine which nodes are in its direct wireless range. These nodes are called neighbours. During inclusion and later on request, the node is able to inform the controller about its list of neighbours. Using this information, the controller is able to build a table that has all the information about possible communication routes in a network. The user can access the routing table. There are several software solutions, typically called installer tools, which visualise the routing table to optimize the network setup. A controller will always try first to transmit its message directly to the destination. If this is not possible it will use its routing table to find the next best way to the destination. The controller can select up to three alternative routes and will try to send the message via these routes. Only

if all three routes fail (the controller does not receive an acknowledgement from the destination) the controller will report a failure.

Chapter 3

Fibaro System Modules

3.1 Fibaro Dimmer FGD211



Figure 3.1: Dimmer module, FGD-211

Radio controlled light dimming module, designed to work with light sources of any type. May be connected to two-wire or three-wire electric installation (with or without neutral wire). Fibaro Dimmer can switch or dim connected light source either through radio waves or through the wall switch connected directly to it. Automatically senses connected device, features automatic overload protection switch-off and soft start function. Works as a dimmer or as a connector, with two-wire or three-wire installations. In case of fluorescent light sources or certain transformers, only on/off function may be possible.

3.1.1 Product Characteristics

As at light dimmer it operates under the following loads:

- Conventional incandescent
- Halogen 230V
- Low voltage halogen 12V (with electronic transformers)
- Dimmable LED
- When used with FGB001 it may operate with any dimmable load up to 500W*

Moreover, as an electronic switch it may work with:

- Compact fluorescent lamps
- LED bulbs
- Fluorescent lamps with electronic ballast and the majority of conventional ballasts
- When used with FGB001 it may operate with any dimmable load up to 500W

3.1.2 Specifications

- Power supply: 230V \pm 10%, 50Hz,
- Output Power: 25-500W (for resistive loads - 230V); 10-250W (for resistive loads - 110V),
- Dimmer type: Leading-edge dimmer
- In accordance with EU standards: EN 55015 (noise) EN 60669-2-1 (operational safety), AS/NZS 3100 (general requirements for electrical products)
- Overcurrent protection: 2,5A,
- Circuit temperature limits: 105 °C,
- Ambient temperature: from 10 to 40 °C,
- For installation in boxes: $\varnothing \geq 50$ mm,
- Radio protocol : Z-Wave,
- Radio Frequency: 868,4 MHz for EU; 908,4 MHz for US; 921,4 MHz for AUS/NZ/BRA,
- Range: up to 50 m outdoors; up to 30 m indoors (depending on building materials),

- Dimensions (H x W x D): 15 x 42 x 36 mm.
- Electricity consumption: 0,8W

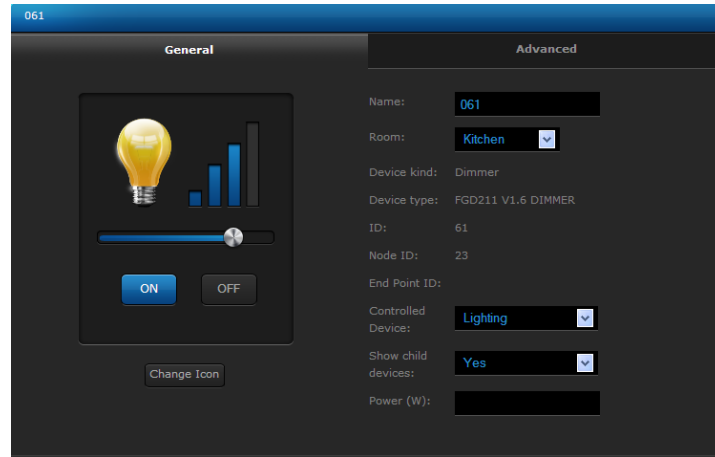


Figure 3.2: Dimmers Configuration Window

Dimmers configuration window (HC2 interface) shows following parameters:

- *Device name*
- *Room* - parameter available from the list of rooms created (see 5.3 for detailed description,
- *Device kind*
- *Device type*
- *ID* - Devices number,
- *Node ID* - Unique devices number within Z-Wave network,
- *EndPointID* - Multichannel devices number,
- *Controlled device* - Parameter taken from available devices list,
- *Show Slave Devices*
- *Power Output*

3.1.3 Example Configuration Parameters

Configuration parameters, for each module are available in the Advanced Settings tab, for each device, in the Home Center 2 interface.

Parameter 8

% change assigned to one step (automatic operation). *Default setting: 1%*

Parameter 9

Time to switch between min. / max. dimm level at manual operation. *Default setting: 0.05s*

Parameter 10

Time to switch between max. / min. dimm level at remote operation. 0 turns off smooth dimming level change.

WARNING *inductive and capacitive devices must be set to 0 to work properly (fluorescent lamps, electric motors).*

Parameter 12

Max. dimming level. *Default setting: 99%*

Parameter 13

Min. dimming level. *Default setting: 2%*

WARNING! *Max level must be always higher then min.*

NOTE *In case of fluorescent lights or non-dimmable LEDs the max. dimming level must be set at 98%; min at 99%. If settings are too low when AC powered motors are used, operation may result in motor failure.*

Parameter 14

Wall Switch type - mono-stable (press switch) or bi-stable *Default setting: mono-stable.*

Parameter 15

Double Click ON / OFF. *Default setting: ON(double click = lights set to 100%)*

Parameter 17

Stair switch function On / Off *Stair Switch Off.* **WARNING!** *Dimmer works with two bi-stable switches or infinite number of mono-stable switches.*

Parameter 18

Synchronize Dim level for associated devices On / Off. *Default setting: OFF*

3.1.4 Associations

Association lets a Dimmer trigger other Z-Wave devices, e.g. another Dimmer, Relay Switch, Roller Shutter. Triggering is performed in direct communication between devices, without contacting the Primary Master Controller (Home Center 2).

A Dimmer may associate with up to 16 ordinary devices or up to 7 multi-channel devices per association group, from which 1 device is always a network controller. Recommended number of devices per association - 10. The more devices are associated, the longer time will take for association action to take effect on each associated device.

Dimmer supports two association groups - I and II:

I association group is designated for Switch Key no.1,

II association group is designated for Switch Key no.2.

NOTE The following parameter refers to II association group:

Parameter 7

GET Device State before sending steering frame assigned to key no.2. *Default Setting: GET frame sent, device state checked before sending association command.*

3.1.5 Tips and Tricks

1. *How to include a Dimmer module connected to fluorescent lamp?*

To include a Dimmer connected to fluorescent lamp, please connect the module and fluorescent lamp observing wiring diagram (operating manual), connect power input and double click button "B" or key switch connected to S1 input. Fluorescent lamp should turn ON (Dimmer turns ON with full power). Next, complete inclusion process as described in the operating manual.

2. *How to set parameters for fluorescent lamp?*

- Parameter 10: 0 seconds,
- Parameter 13: 98%

3. *What kind of dimming does the Fibaro Dimmer provides?*

The Fibaro Dimmer is a Leading-Edge type dimmer. The module is compatible with universal transformers and those designed for leading-edge type dimming (inclining sinusoid curve).

3.1.6 Wiring Diagrams - Dimmer

1. Before beginning, please make sure power supply is disconnected.
2. Connect Dimmer observing wiring diagram shown below.
3. Insert Dimmer and wall switch into connecting box.
4. While completing point 3. please take special care to lay antenna wire properly.

Symbols description:

- L - live wire,
- N - neutral wire,
- O - Dimmer output,
- Sx - power for Switch connected to the Dimmer,
- S1 - switch key 1 (also, enters Dimmer module into learning mode, see inclusion process),
- S2 - switch key 2,
- B - service key (used for including/excluding device, see S1).

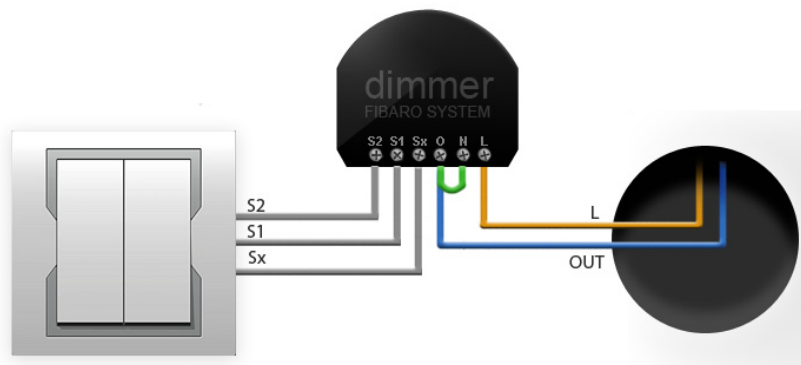


Figure 3.3: Dimmer wiring diagram

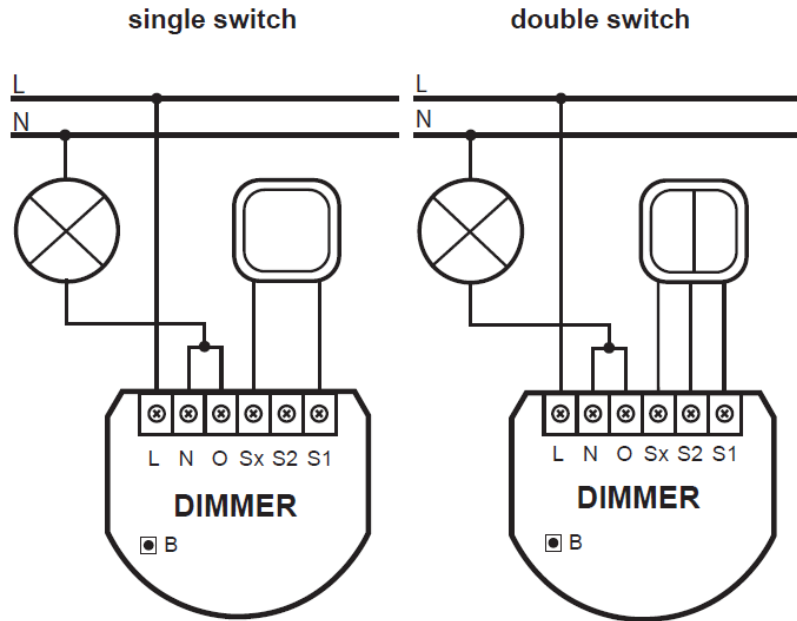


Figure 3.4: Dimmer wiring diagram - 2-wire connection

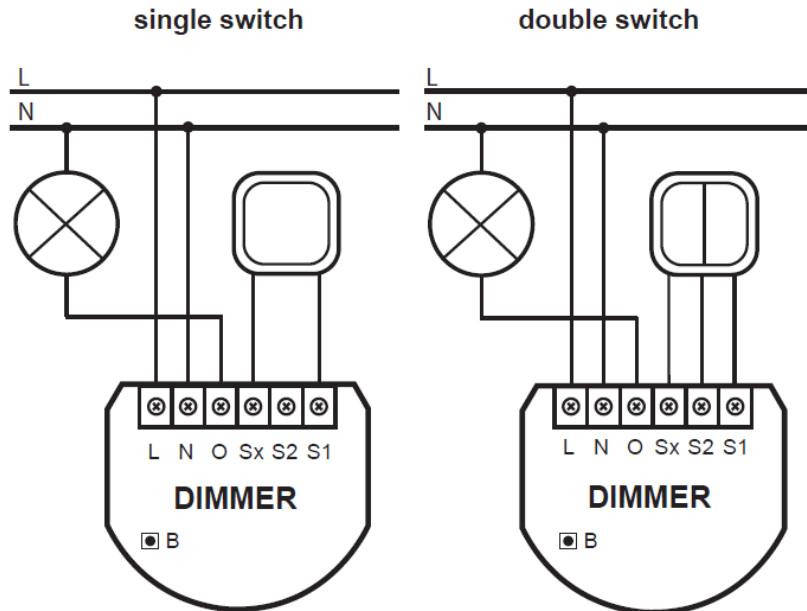


Figure 3.5: Dimmer wiring diagram - 3-wire connection

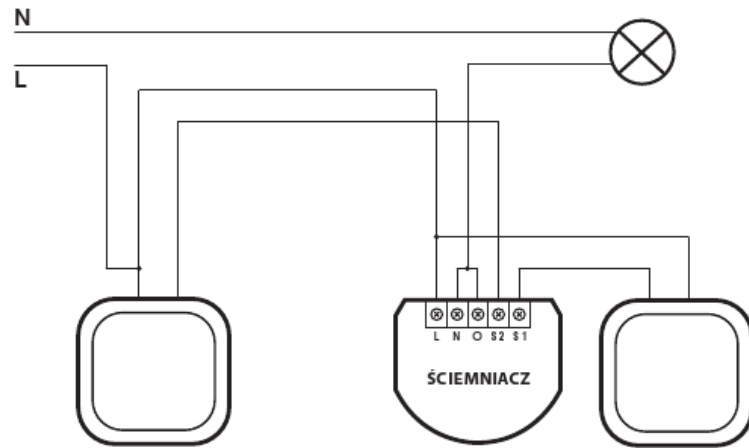


Figure 3.6: Dimmer wiring diagram - 3 way connection

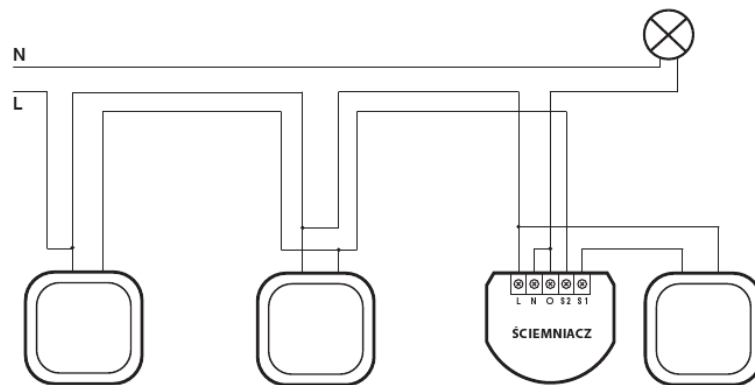


Figure 3.7: Dimmer wiring diagram - 4-way connection

3.2 Relay Switch 2x1,5kW FGS211



Figure 3.8: Relay Switch 2x1,5kW module, FGS-221

The radio controlled Fibaro Double On/Off Relay Switch is designed to be installed in standard wall switch boxes, or anywhere else where it is necessary to operate two independent devices of 1,5kW power output each. The Fibaro Double On/Off Relay Switch can switch connected devices on or off either through radio waves or through the wall switch connected directly to it.

3.2.1 Product Characteristics

- Controlled by FIBARO system devices or any Z-Wave controller.
- Microprocessor control.
- Executive elements: relays.
- The device may be operated by mono-stable (press switch) and bi-stable push-buttons.

3.2.2 Specifications

- Power supply: 24 - 230V $\pm 10\%$ 50/60Hz,
- Maximum load current for single AC output: 8A / 230V 50/60Hz*,
- Maximum load current for single DC output: 8A / 30V*,
- Output circuit power (resistive load-230V): 2 x 1,5 kW*,
- Comply with standards: EN 55015; EN 60669-2-1, AS/NZS 3100
- Temperature limits: 105 °C,
- Operational temperature: from 0 to 40 °C,

- For installation in boxes: $\varnothing \geq 50\text{mm}$,
- Radio protocol: Z-Wave,
- Radio Frequency: 868 MHz for EU; 908 MHz for US; 921 MHz for AUS/NZ/BRA
- Range: up to 50 m outdoors, up to 30 m indoors (depending on building materials),
- Dimensions (H x W x D) 15 x 42 x 38 mm.
- Electricity consumption: $\approx 0,8\text{W}$

** In case of load other than resistive, pay attention to the value of $\cos\varphi$ and if necessary apply load lower than the rated load.*

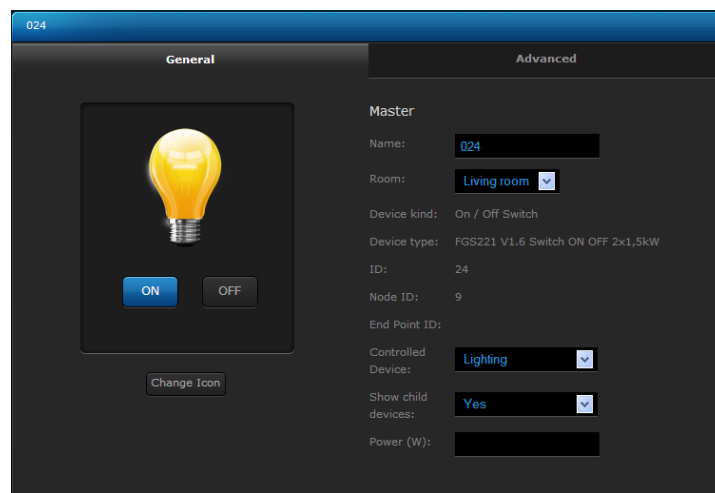


Figure 3.9: Relay Switch 2x1,5kW configuration window

Relay Switch 2x1,5kW configuration window (HC2 interface) shows the following parameters:

- *Devices name*
- *Room* - Parameter available from the list of rooms created (see 5.3 for detailed description)
- *Device kind*
- *Devices type*
- *ID* - Devices number
- *Node ID* - Unique devices number within Z-Wave network,

- *EndPointID* - Multichannel devices number
- *Controlled Device* - Parameter taken from available devices list
- *Show Slave Devices*
- *Show Slave Devices*
- *Power Output*

3.2.3 Example Configuration Parameters

Configuration parameters for each module are available in the Advanced Settings tab for each device in the Home Center 2 interface.

Parameter 3

Relay Auto OFF after specified time. *Default Setting: Auto OFF disabled.*

Parameter 4 & 5

Relay 1 / 2 Auto OFF after specified time. *Default Setting: 0,2s*

Parameter 13

State Change (ON / OFF) for bistable switch (Parameter no.14). *Default Setting: key position change = ON or OFF.*

Parameter 14

Switch Type - mono-stable (press switch) or bistable. *Default Setting: mono-stable.*

Parameter 15

Operating associated Dimmer / Roller Shutter, enable / disable. *Default Setting: disable. (If enabled, hold or double click given key to trigger associated Dimmer / Roller Shutter).*

Parameter 16

Device On / Off after power cut. *Default setting - OFF*

3.2.4 Associations

Association lets Relay Switch 2x1,5kW trigger other Z-Wave devices, e.g. Dimmer, another Relay Switch, Roller Shutter, or a scene (only involving Home Center 2). Triggering is performed in direct communication between devices, without contacting the Home Center 2 (except for the use as a scene triggering device).

Relay Switch 2x1,5kW may associate with up to 16 ordinary devices or up to 7 multi channel devices per association group, from which 1 device is always a network controller. Recommended number of devices per association - 10. The more devices that are associated, the longer it will take for association action to take effect on each associated device.

Relay Switch 2x1,5kW supports two association groups - I and II:

I association group is designated for Switch Key no.1,

II association group is designated for Switch Key no.2.

3.2.5 Tips and Tricks

1. *What is the minimum powering voltage?*

Relay Switch 2x1,5kW may be powered by 24V DC current.

2. *May I connect two different Live wires - one for the module, another one for the device triggered by the module?*

Yes, a Relay Switch 2x1,5kW may be connected to two independent circuits at the same time - one powering the module, another one (even powered by a different voltage) powering the circuit triggered by the module.

3. *May I use Relay Switch 2x1,5kW in two and three wire electrical systems, just like the Dimmer?*

The Relay Switch 2x1,5kW is designed to work on three-wire electrical system only, i.e. it needs the Neutral wire.

4. *I would like to use two Relay Switch 2x1,5kW modules to control home alarm control unit, but it is powered by 12V current.*

In such a case another circuit, powering the Relay Switches (with 24V at least) will be necessary (see p. 2)

5. *Can I use the Relay Switch modules to operate floor heating?*

Yes. These modules may be used to operate both electrical and hydraulic floor heating systems, in such use the modules will be used to turn electric valves ON or OFF. Heating itself will be programmed in the Heating Panel in of the HC2. For monitoring temperature we recommended the use of a DS18B20 sensor, together with a Fibaro Universal Binary Sensor.

Wiring Diagrams - Relay Switch 2x1,5kW

1. Before beginning, please make sure power supply is disconnected.
2. Connect Relay Switch 2x1,5kW observing wiring diagram shown below.

3. Insert Relay Switch 2x1,5kW and wall switch into connecting box.
4. While completing point 3. please take special care to lay antenna wire properly.

Symbol descriptions - Relay Switch 2x1.5kW :

- N - Neutral wire
- L - Live wire
- I - Output device power in
- O1 - Output 1
- O2 - Output 2
- S1 - Switch key 1 (also, enters the module into learning mode, see. inclusion process)
- S2 - Switch key 2
- B - Service key (used for including/excluding device, see S1)

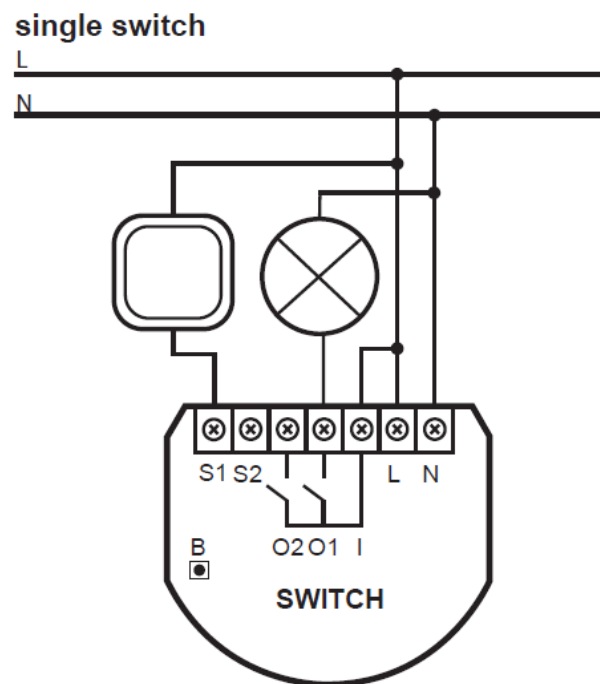


Figure 3.10: Single switch, Relay Switch 2x1,5kW connection diagram

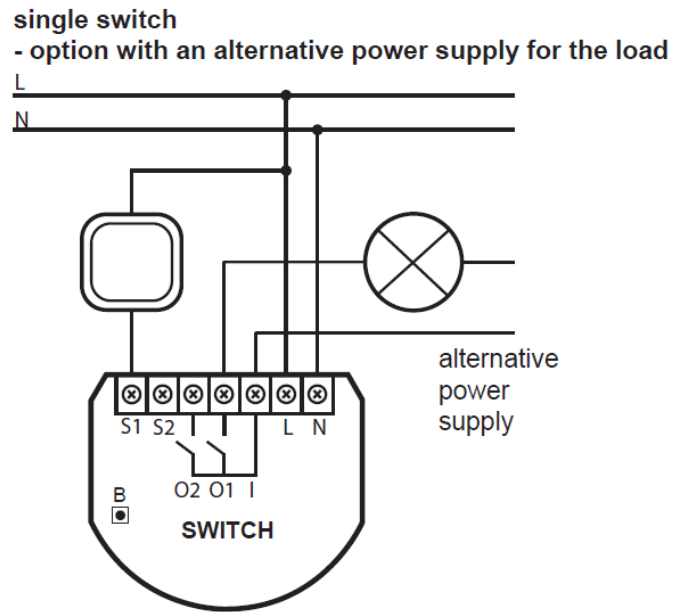


Figure 3.11: Single switch with an alternative power supply for the load

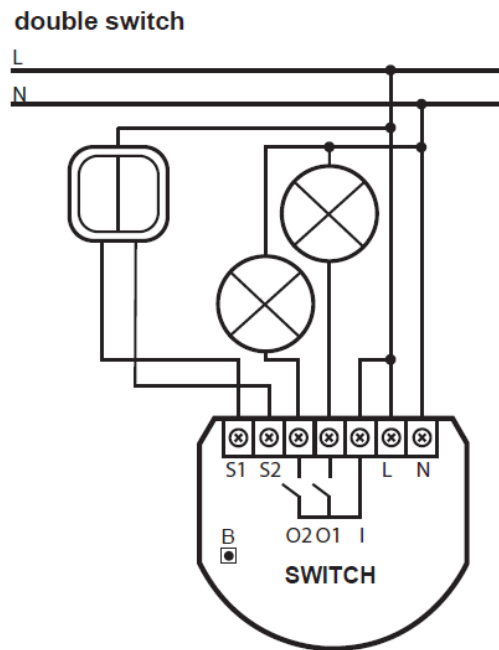


Figure 3.12: Double switch, Relay Switch 2x1,5kW connection diagram

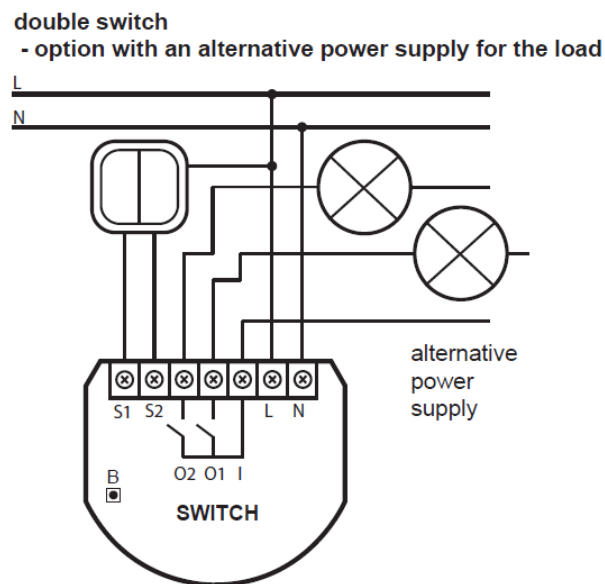


Figure 3.13: Double switch with an alternative power supply for the load

3.3 Relay Switch 1x3kW FGS211



Figure 3.14: Relay Switch 1x3kW module, FGS-211

Radio controlled Fibaro Double On/Off Relay Switch is designed to be installed in standard wall switch boxes, or anywhere else where it is necessary to operate one single device of 3,0kW power output. Fibaro Double On/Off Relay Switch can switch connected device on or off either through radio waves or through the wall switch connected directly to it.

3.3.1 Product Characteristics

- Controlled by FIBARO system devices or any Z-Wave controller.
- Microprocessor control.
- Executive elements: relays.
- The device may be operated by mono-stable (press-switch) and bi-stable push-buttons.

3.3.2 Specifications

- Power supply: 24 - 230V $\pm 10\%$ 50/60Hz,
- Maximum load current for single AC output: 8A / 230V 50/60Hz*,
- Maximum load current for single DC output: 8A / 30V*,
- Output circuit power (resistive load-230V): 2 x 1,5 kW*,
- Comply with standards: EN 55015; EN 60669-2-1, AS/NZS 3100
- Temperature limits: 105 °C,
- Operational temperature: from 0 to 40 °C,

- For installation in boxes: $\varnothing \geq 50\text{mm}$,
- Radio protocol: Z-Wave,
- Radio Frequency: 868 MHz for EU; 908 MHz for US; 921 MHz for AUS/NZ/BRA
- Range: up to 50 m outdoors, up to 30 m indoors (depending on building materials),
- Dimensions (H x W x D) 15 x 42 x 38 mm.
- Electricity consumption: $\approx 0,8\text{W}$

** In case of load other than resistive, pay attention to the value of $\cos\varphi$ and if necessary apply load lower than the rated load.*

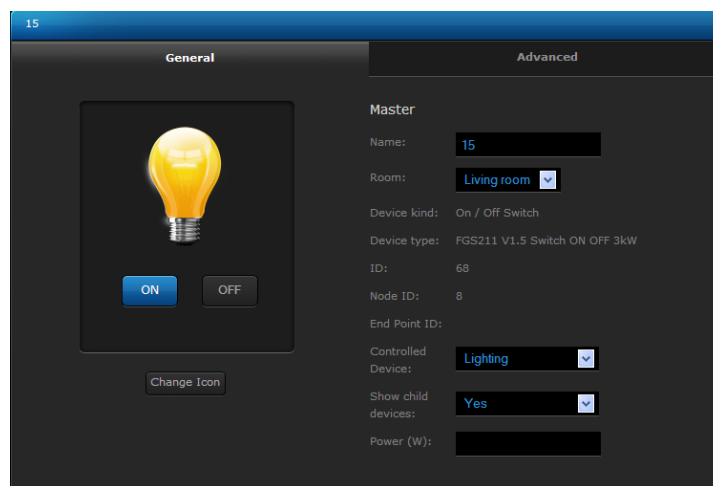


Figure 3.15: Relay Switch 1x3kW Configuration Window

Relay Switch 2x1,5kW configuration window (HC2 interface) shows following parameters:

- *Device name*
- *Room* - Parameter available from the list of rooms created (see 5.3 for detailed description)
- *Device kind*
- *Devices type*
- *ID* - Devices number
- *Node ID* - Unique devices number within Z-Wave network,

- *EndPointID* - Multichannel devices number
- *Controlled Device* - Parameter taken from available devices list
- *Show Slave devices*
- *Show Slave devices*
- *Power Output*

3.3.3 Example Configuration Parameters

Configuration parameters for each module are available in the Advanced Settings tab for each device in the Home Center 2 interface.

Parameter 3

Relay Auto OFF after specified time. *Default Setting: Auto OFF disabled.*

Parameter 4

Relay Auto OFF after specified time. *Default Setting: 0,2s*

Parameter 13

State Change (ON / OFF) for bistable switch (Parameter no.14). *Default Setting: key position change = ON or OFF.*

Parameter 14

Switch Type - mono-stable (press switch) or bistable. *Default Setting: mono-stable.*

Parameter 15

Operating associated Dimmer / Roller Shutter, enable / disable. *Default Setting: disable. (If enabled, hold or double click given key to trigger associated Dimmer / Roller Shutter).*

Parameter 16

Device On / Off after power cut. *Default setting - OFF*

3.3.4 Associations

Association lets a Relay Switch 1x3,0kW trigger other Z-Wave devices, e.g. Dimmer, another Relay Switch, Roller Shutter, or a scene (only involving Home Center 2). Triggering is performed in direct communication between devices, without contacting Home Center 2 (except for the use as a scene triggering device).

Relay Switch 1x3,0kW may associate with up to 16 ordinary devices or up to 7 multi channel devices per association group, from which 1 device is always a network controller. Recommended number of devices per association - 10. The more devices that are associated, the longer it will take for association action to take effect on each associated device

Relay Switch 1x3,0kW supports two association groups - I and II:

I association group is designated for Switch Key no.1,

II association group is designated for Switch Key no.2.

3.3.5 Wiring diagrams - Relay Switch 1x3,0kW

1. Before beginning, please make the sure power supply is disconnected.
2. Connect Relay Switch 1x3,0kW observing wiring diagram shown below.
3. Insert Relay Switch 1x3,0kW and wall switch into connecting box.
4. While completing point 3. please take special care to lay antenna wire properly.

Symbol descriptions:

- N - neutral wire
- L - live wire
- I - output device power in
- O - output
- S2 - switch key 2,
- S1 - switch key 1 (also, enters the module into learning mode, see. inclusion process),
- B - service key (used for including/excluding device, see S1)

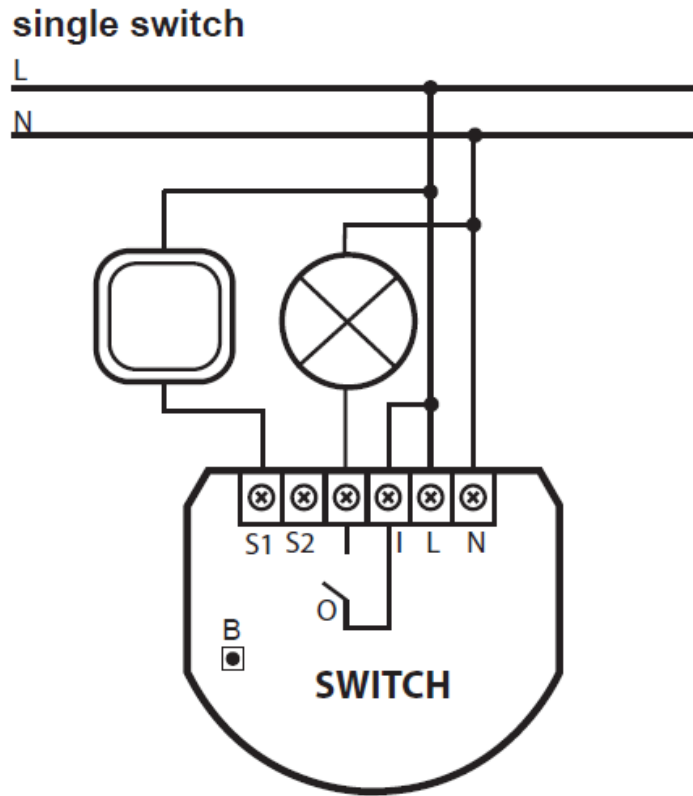


Figure 3.16: Single switch, Relay Switch 1x3kW wiring diagram

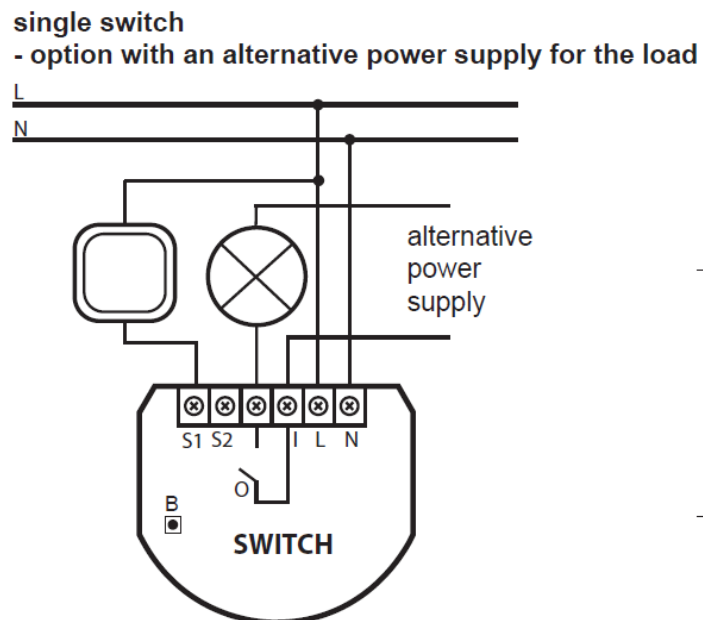


Figure 3.17: Single switch with an alternative power supply for the load

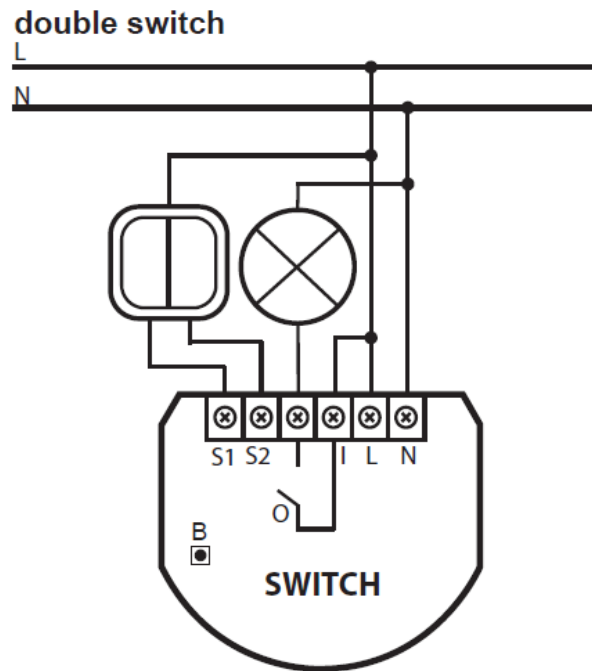


Figure 3.18: Double switch, Relay Switch 1x3kW wiring diagram

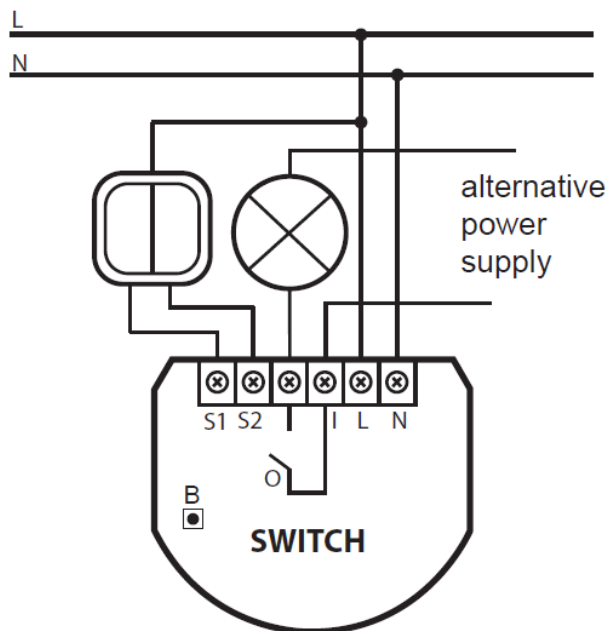


Figure 3.19: Double switch with an alternative power supply for the load

3.4 Roller Shutter FGR211



Figure 3.20: Roller Shutter module. FGR-221

Radio controlled module, designed to work with electric motors in blinds, rollers, canopies. Fibaro Blind/Roller Shutter can control the connected device either through radio waves or through the wall switch, connected directly to it. Equipped with unique feature of monitoring current Roller/Blind position.

3.4.1 Product Characteristics

- Controlled by FIBARO system devices or any Z-Wave controller.
- Microprocessor control.
- Executive elements: relays.
- The device may be operated by mono-stable (press switch), bi-stable push-buttons, dedicated roller blinds buttons.

***NOTE** Precise roller blind positioning is possible for blind with mechanical stop-switches. For roller blinds with electronic control, please turn OFF positioning function (parameter 10)*

3.4.2 Specifications

- Power supply: 110 - 230V $\pm 10\%$ 50/60Hz,
- Power of supplied motor: up to 1kW for 230V; up to 500W for 110V
- Rated motor current - 4,3A / 230V 50/60Hz
- In accordance with standards: EN 55022; EN 61000; AS/NZS 3100
- Temperature limits: 105 °C,

- Operational temperature: from 0 to 40 °C,
- For installation in boxes: $\varnothing \geq 50\text{mm}$,
- Radio protocol: Z-Wave,
- Radio Frequency: 868 MHz for EU; 908 MHz for US; 921 MHz for AUS/NZ/BRA.
- Range: up to 50 m outdoors, up to 30 m indoors (depending on building materials)
- Dimensions (H x W x D): 15 x 42 x 36 mm
- Electricity consumption - $\leq 0,8\text{W}$

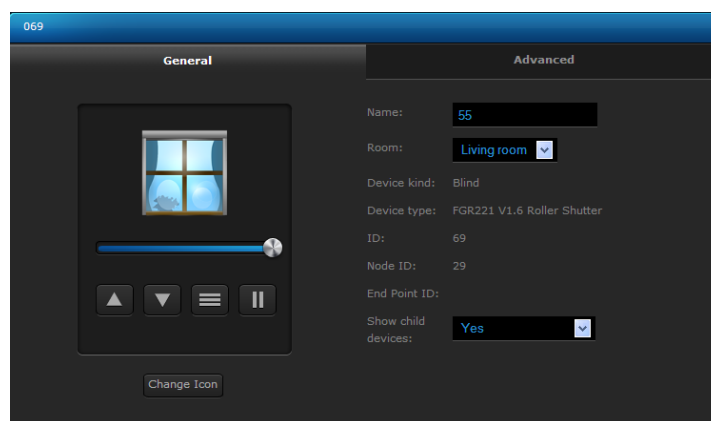


Figure 3.21: Roller Shutter configuration window

Roller Shutter configuration window (HC2 interface) shows following parameters:

- *Devices name*
- *Room* - Parameter available from the list of rooms created (see 5.3 for detailed description)
- *Device kind*
- *Device type*
- *ID* - Devices number
- *Node ID* - Unique devices number within Z-Wave network
- *EndPointID* - Multichannel devices number
- *What device controls* - Parameter taken from available devices list
- *Show slave devices*

3.4.3 Roller Shutter Calibration

After a successful inclusion process, the Roller Shutter module should be calibrated. The calibration process involves performing two complete cycles of opening/closing the roller blind. Properly completed calibration may be verified by setting required position of the roller blind using the icon e.g. 30% of roller blind opening - the actual opening should correspond to specified value/position.

3.4.4 Example Configuration Parameters

Parameter 10

Roller Blind positioning status. *Default Setting: ON*

Parameter 14

Switch Type - monostable (press switch) or bistable. *Default Setting: 16%*

3.4.5 Associations

Association lets Roller Shutter trigger other Z-Wave devices, e.g. Dimmer, Relay Switch, another Roller Shutter, or a scene (only involving Home Center 2). Triggering is realised in direct communication between devices, without contacting Home Center 2 (except for the use as a scene triggering device).

Roller Shutter supports two association groups - I and II:

I association group is triggered by single click of any Switch Key,

II association group is triggered by pressing and holding any Switch Key.

Roller Shutter may associate with up to 16 ordinary devices or up to 7 multi channel devices per association group, from which 1 device is always a network controller. Recommended number of devices per association - 10. The more devices are associated, the longer time is needed for association action to take effect on each associated device.

3.4.6 Connecting Scheme - Roller Shutter

1. Before beginning, please make sure power supply is disconnected.
2. Connect Roller Shutter observing connecting scheme shown below.
3. Insert Roller Shutter and wall switch into connecting box.
4. While completing point 3. please take special care to lay antenna wire properly.

Symbols description

- L live wire
- N neutral wire
- S1 switch key 1 (also, enters the module into learning mode, see. inclusion process)
- S2 switch key 2
- O1 output 1
- O2 output 2
- B - service key (used for including/excluding device, see S1)

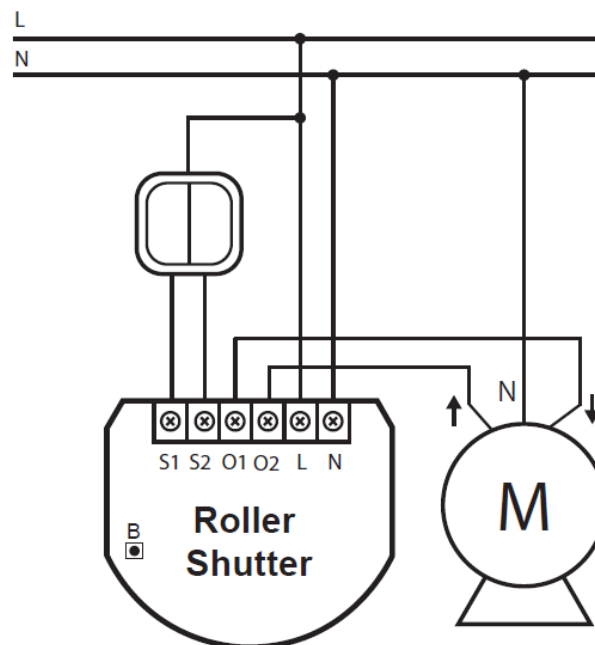


Figure 3.22: Wiring diagram - Roller Shutter

3.5 Dimmer Bypass FGB 001



Figure 3.23: Bypass module, FGB-001

Bypass Fibaro is a device complementary to Fibaro Dimmer FGD211. Its installation enables the Dimmer to dim light sources with minimum power consumption, such as e.g. single 0,5Watt LED. Please note it is possible to dim only light sources clearly marked as dimmable.

3.5.1 Specifications

- Power source: 230V \pm 10% 50Hz
- Temperature limits: 105 °C
- Outside dimensions (L x W x H) - 17mm x 18mm x 8,3mm.

3.5.2 Connecting Scheme - Bypass

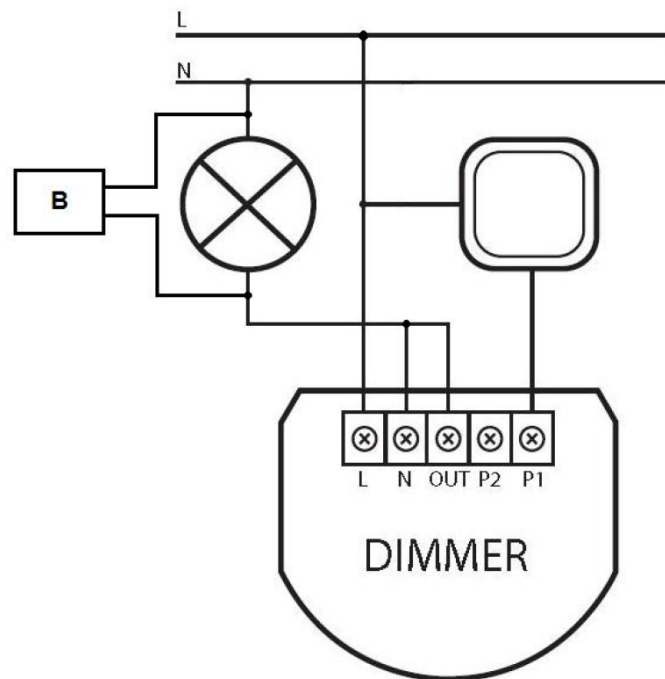


Figure 3.24: Wiring diagram - Bypass

Chapter 4

Wireless Z-Wave Sensors

The Fibaro System consists of a constantly growing range of wireless sensors. All of the sensors communicate using the Z-Wave protocol. Their main characteristic is battery power supply allowing sensors to be installed almost anywhere, within the range of Z-Wave network. The Expected maximum battery life is 2 - 3 years, and the battery state may be monitored via the Home Center 2. Z-Wave wireless sensors do not serve as mesh network signal relays. For that reason all of them should be included into system after being installed in desired places. Because of they are battery powered, wireless sensors do not communicate with the Home Center 2 on constant basis. They are referred to as "sleeping nodes", i.e. Home Center 2 communicates with them (checking their status and network presence) in certain time intervals, these are defined as the "Wake up intervals" parameter in the device's configuration. In addition to regular, interval based communication, each battery powered sensor communicates with the HC2 in case of breach, arming or a forced change of state, i.e. in the case of detecting a certain action.

4.1 Universal Binary Sensor

The Universal Binary Sensor is a wireless module designed for increasing any binary output sensor's functionality by adding possibility of wireless communication with Z-Wave network and Fibaro System. Moreover, the module enables inclusion of DS18B20 temperature sensors to the Fibaro System. A single Universal Binary Sensor supports up to two binary sensors of any type, or four DS18B20 temperature sensors. The Universal Binary Sensor is so small it can be placed inside the casing of a sensor or other device that needs to be increased functionality. The Universal Binary Sensor may be used anywhere, where wireless data collection, from sensors, is needed. After the appropriate protection, the module may be used in high humidity or temperature situations. The Universal Binary Sensor was designed primarily for the use with existing wired and wireless alarm and control systems, so that they could be easily integrated with the Fibaro System. For the use with alarm system, the module is 100% transparent to parametric lines.



Figure 4.1: Universal Binary Sensor - Icons Views

Product Characteristics:

- Controlled by Fibaro System devices or any other Z-Wave controller.
- Microprocessor control.
- Compatible with standard and parametric alarm lines (may be connected to single alarm sensor with tamper button, or two alarm sensors without tampers).
- Compatible with binary sensors (may be connected to two binary outlets).
- Compatible with DS18B20 temperature sensors (supports up to four DS18B20 temperature sensors).

4.1.1 Specifications

- Power supply: 9-30V \pm 10% DC
- Inputs: 2 floating inputs, 1 digital input 1-wire
- Outputs: 2 floating outputs
- Max. input voltage: 36V \pm 5% DC
- Output carrying capacity: 150mA
- Operational temperature: from 0 °C to 40 °C
- Radio protocol: Z-WAVE
- Radio Frequency: 868 MHz for EU; 908 MHz for US; 921 MHz for AUS/NZ/BRA.
- Range: up to 50 m outdoors, up to 30 m indoors (depending on building materials)
- Number of supported DS18B20 temperature sensors: up to 4

4.1.2 Example Configuration Parameters

Configuration parameters, for each module, available in Advanced Settings tab, for each device, in Home Center 2 interface.

Parameter 1

Delayed alarm cancellation at input IN1. This option enables you to define additional time after which IN1 alarm gets cancelled after it's breach is no longer present.

Default value: 0

Parameter 2

Delayed alarm cancellation at input IN2. This option enables you to define additional time after which IN2 alarm gets cancelled after it's breach is no longer present. *Default value: 0*

Parameter 3

Input 1 type.

Default value: 1 = INPUT NC (Normal Close)

Default value: 1 = INPUT_NC (Normal Close)

Parameter 4

Input 2 type.

Default value: 1 = INPUT_NCNC (Normal Close) *Default value: 1 - INPUT NC (Normal Close)*

Parameter 5

Steering frame type for 1st association group, triggered from input IN1. Parameter enables setting alarm frame type or forces sending of steering frames (BASIC_SET).

Default value: 255 = BASIC_SET

Parameter 6

Steering frame type for 2nd association group, triggered from input IN2. Parameter enables setting alarm frame type or forces sending of steering frames (BASIC_SET).

Default value: 255 = BASIC_SET

Parameter 7

Parameter defining forced level of dimming/blinds opening in case TURN ON/OPEN commands are sent to devices of 1st association group. In case of alarms, alarm priority is defined.

Default setting enables turning device ON. In case of Dimmer this means turning to last memorized status.

Default value: 255.

Parameter 8

Parameter defining forced level of dimming/blinds opening in case TURN ON/OPEN commands are sent to devices of 2nd association group. In case of alarms, alarm priority is defined.

Default setting enables turning device ON. In case of Dimmer this means turning to last memorized status.

Default value: 255

Parameter 9

Alarm cancelling frame or turning the device off steering frame (Basic) - deactivated. Allows you to deactivate the feature off and cancel alarms for devices paired with the given input of Fibaro Sensor.

Default value: 0, for association groups 1 & 2 information is sent.

Parameter 10 The interval between temperature readings from all sensors connected to the device. NOTE: The temperature reading from the sensor does not result in sending a report to HC unit.

Default value: 20 sec.

Parameter 11

The interval between successive reports on the state of the temperature. Forced report is sent immediately after the next reading of the temperature sensor

regardless of the setting of parameter No. 12

Default value: 200 sec.

NOTE *Frequent reports on the state of the temperature make sense in the case when the sensor is placed at the point where it is exposed to rapid changes in ambient temperature. In other cases, we recommend you left the default value of the parameter.*

Parameter 12

Maximum allowed difference in temperature last reported and currently recorder by the sensor. If the difference in temperature meets or exceeds defined level, then report to device in third association group is sent. Parameter 10 defines intervals between temperature readouts.

Value set at 0 means sensor reports each change in temperature.

Default value: 8 [0,5°C]

Parameter 13

Alarm frames or steering frames sent in broadcast mode i.e. to all devices within the device's reach.

Default vaule = 0 (broadcast mode OFF).

NOTE *Broadcast mode cancels "single cast" communication with associated devices for given channel.*

Parameter 14 Scene activation. Scene number corresponds to button pushed.

Default value = 0

4.1.3 Universal Binary Sensor - Inclusion / Exclusion

After entering Home Center 2 into learning mode (described in 5), triple click button "B".

4.1.4 Wiring Diagrams - Universal Binary Sensor

Please note:

- When using DS18B20 temperature sensors, it is recommended to use single wire cables, no longer than 30 m.
- Do not arrange DS18B20 temperature sensors cables parallel to house electrical system cables (230V AC). High voltage AC wires may induce magnetic field resulting in erroneous DS18B20 temperature sensors readouts.
- DS18B20 temperature sensors should be tested before being mounted in desired locations.

- Depending on number of the devices connected to it, the Universal Binary Sensor may be presented in HC2 interface as 3 to 7 different devices.
- In case of any changes in TP / TD line (1-wire) configuration, i.e. adding/removing DS18B20 temperature sensors, it is necessary to exclude and re-include the Universal Binary Sensor to Z-Wave network. Please note, HC2 will enter learning mode only after all connected sensors are detected, which may take up to 10 seconds.
- Do not connect sensors other than DS18B20 temperature sensor to TP / TD line (1-wire).
- Do not connect devices not supporting 1-wire protocol to TP / TD line. Lines not in use, must be isolated.

Symbol descriptions:

- Live wire - red
- GND (GROUND) - ground wire, blue
- IN1 - (INPUT 1) - input 1, yellow
- IN2 (INPUT 2) - input 2, green
- TP (TEMP_POWER) - power (3,3V) to DS18B20 temperature sensor, brown
- TD (TEMP_DATA) - signal to DS18B20 temperature sensor, white
- ANT- antenna, black
- B -service button (used for including/excluding device)
- OUT1 - output no.1, assigned to input IN1
- OUT2 - output no.2, assigned to input IN2

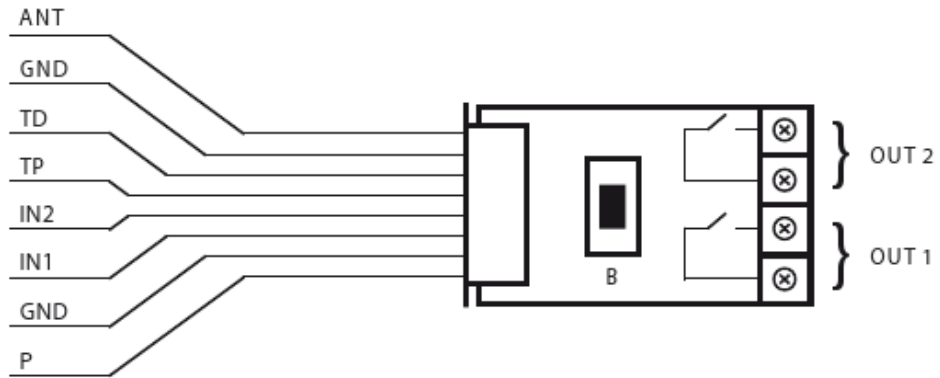


Figure 4.2: Universal Binary Sensor - connections description

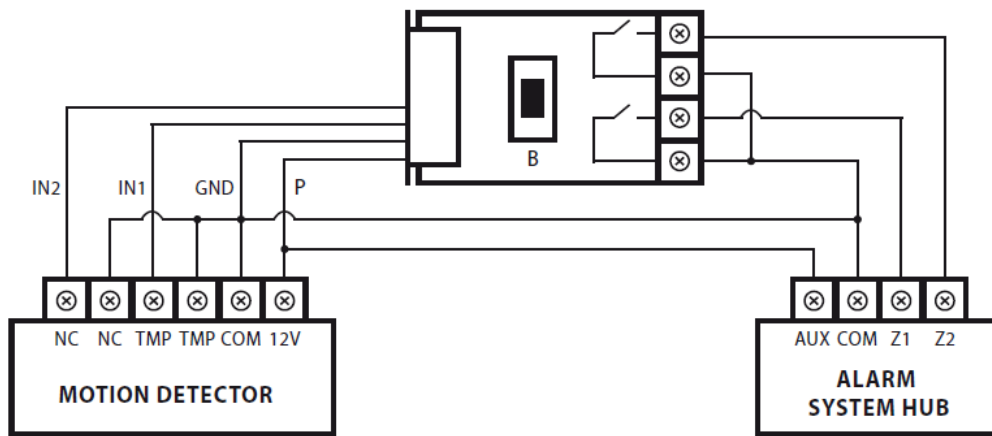


Figure 4.3: Universal Binary Sensor, standard alarm line

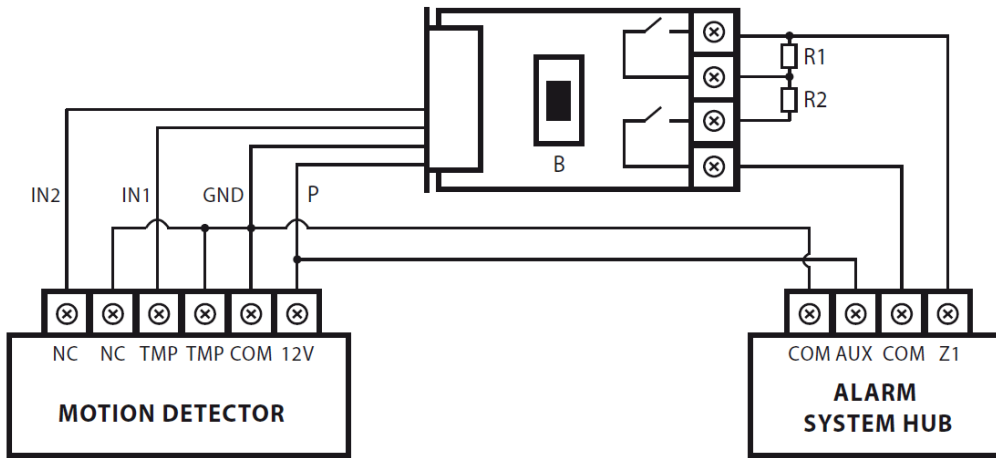


Figure 4.4: Universal Binary Sensor, parametric alarm line

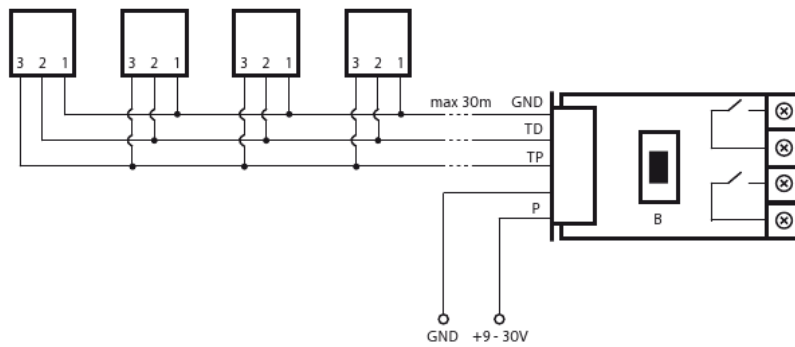


Figure 4.5: DS18B20 temperature sensors connection diagram

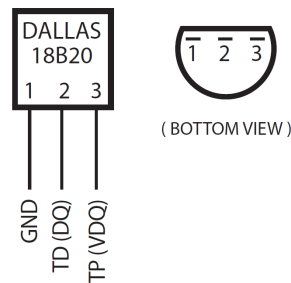


Figure 4.6: DS18B20 connections description

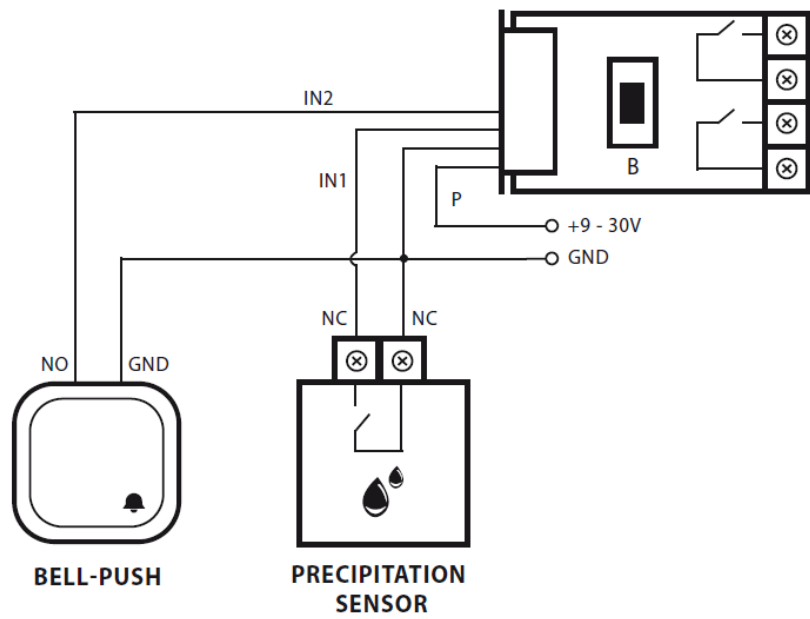


Figure 4.7: Universal Binary Sensor connection diagram

4.2 Danfoss Living Connect Electronic Thermostat



Figure 4.8: Electronic Thermostat Danfoss Living Connect

The Danfoss living connect is an electronic radiator thermostat, which communicates with the Fibaro System through the Z-Wave wireless protocol. Desired temperature is set by the simple click of a button or through Heating Panel in HC2, and then Danfoss Living Connect opens/closes the radiator's valve with an electromechanical actuator. The thermostat features an open-window function, which closes the valve if the temperature in the room is falling dramatically.

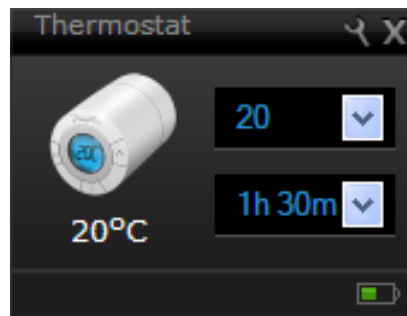


Figure 4.9: Danfoss Thermostat - Parameters Modification Window

Danfoss Thermostat configuration window (HC2 interface) shows following parameters:

- *Devices name*
- *Room* - Parameter available from the list of rooms created (see 5.3 for detailed description)
- *Device kind*
- *Device type*
- *ID* - Devices number

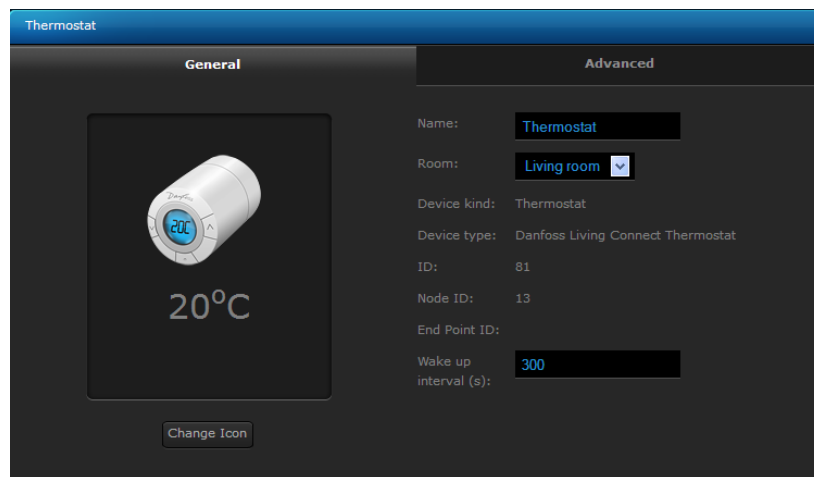


Figure 4.10: Danfoss Electronic Thermostat - configuration window

- *Node ID* - Unique device number within the Z-Wave network,
- *EndPointID* - Multichannel devices number
- *Wake up interval* - Time interval for HC2 to communicate with the thermostat (60 seconds at the minimum)

4.2.1 Specifications

- Radio frequency: 868.42MHz
- Actuator type: Electromechanical
- Recommended use: Household
- Mechanical strength: 70N
- Max. water temperature: 90 °C
- Estimated battery life: 2 years
- Temperature measurement cycle: every 60 seconds
- Power supply: 2x1,5V AA battery
- Power consumption: 3mW in standby, 1,2W when active,
- Ambient temperature: from 0 °C to 40 °C
- Available temperature settings: from 4 °C to 28 °C
- IP 20 - should not be used in hazardous installations or in places where it will be exposed to water

4.2.2 Danfoss Thermostat Inclusion/Exclusion

After setting the HC2 to learning mode (Chapter 5) press the middle button once on the thermostat body. The same sequence must be performed to exclude the device from the Z-Wave network. Because of the Z-Wave system properties, the Danfoss thermostats communicate with the HC2 through one intermediate module only. This is why they should be included into the Z-Wave network after being installed in the desired locations. A single Home Center 2 unit supports up to 20 Danfoss Living Connect electronic thermostats.

4.2.3 Adapters

The Danfoss Living Connect is supplied with adapters for Danfoss RA valves and valves with M30X1.5 (K) connections.

The device is designed to be installed on:

- Danfoss **RA-N** valves
- Other valves with **M30x1,5** connections
- Older Danfoss **RTD-N** valves

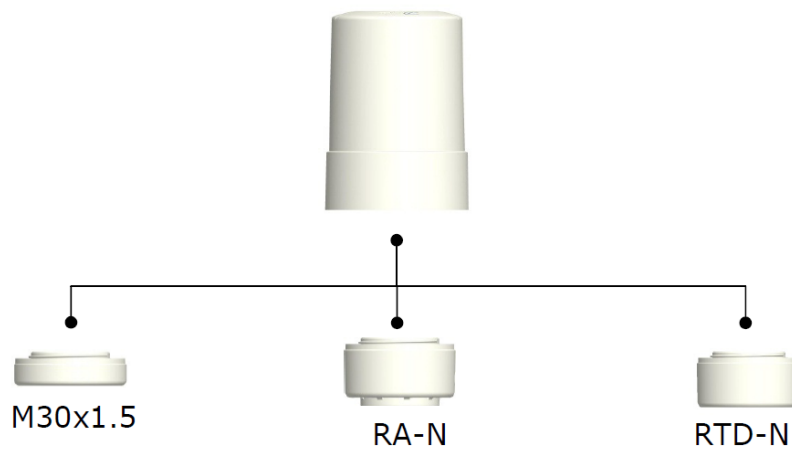


Figure 4.11: Danfoss Thermostat - available adapters

4.3 Motion Sensor



Figure 4.12: Motion Sensor

Everspring SP103 Motion Sensors are designed to detect movement in a protected area by detecting changes in infra-red radiation levels caused, when a person moves within or across the devices field of vision. In this case, a trigger radio signal will be transmitted.

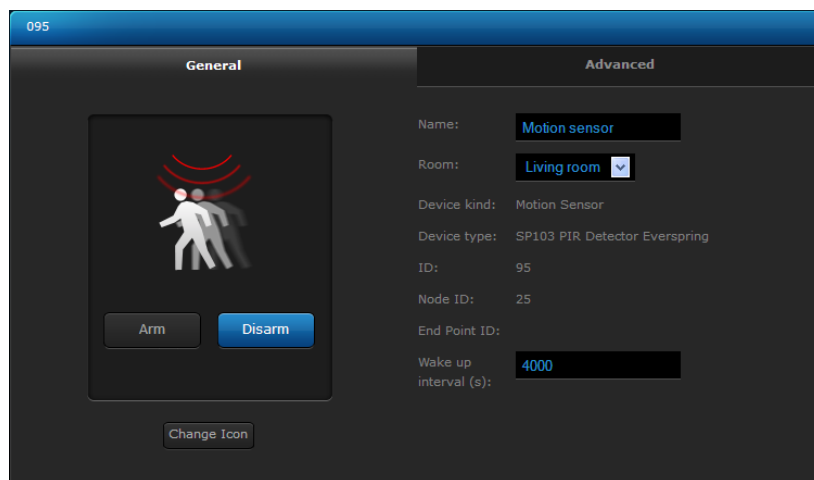


Figure 4.13: Motion Sensor Configuration Window

4.3.1 Specifications

- Communication protocol: Z-Wave
- Device type: slave
- Detection range: ca. 12m

- Detection angle 110 degrees
- Z-Wave communication range: up to 30m indoors
- Power supply: 3x AA

4.3.2 Everspring Motion Sensor Inclusion/Exclusion

After setting HC2 to learning mode (Chapter 5) triple-click the tamper button on the sensor's body. The same sequence must be performed to exclude the device from Z-Wave network.

4.4 Flood Sensor



Figure 4.14: Flood Sensor

The Flood Detector is designed to sense the presence of water in basements, yachts and many others residential and commercial applications, providing early warning of developing floods. The Flood Detector is designed so that the transceiver is mounted on the wall and the flood sensor is placed in a location where water presence, such as a result of leakage or flooding, is probable. Upon flood detection, the Detector will beep and flash and report its status to the node ID. Once water is released, it will report to the node ID as well.

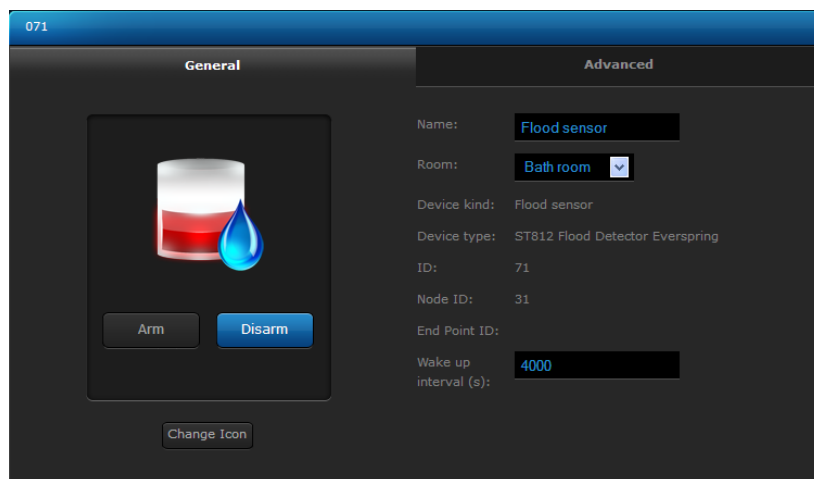


Figure 4.15: Flood Sensor Configuration Window

Eversprings Flood Sensor's configuration window (HC2 interface) shows the following parameters:

- *Devices name*

- *Room* - Parameter available from the list of rooms created (see 5.3 for detailed description)
- *Device kind*
- *Device type*
- *ID* - Devices number
- *Node ID* - Unique devices number within Z-Wave network
- *EndPointID* - Multichannel devices number
- *Wake up interval* - Time interval for HC2 to communicate with the Flood Detector.

4.4.1 Specifications

- Communication protocol: Z-WAVE
- Power supply: 3x1,5V AA batteries
- Z-Wave communication range: Up to 30m indoors.

4.4.2 Everspring Flood Sensor Inclusion/Exclusion

After setting HC2 to learning mode (Chapter 5) triple-click the tamper button on the sensor's body. The same sequence must be performed to exclude the device from Z-Wave network.

4.5 Temperature and Humidity Sensor



Figure 4.16: Temperature and Humidity Sensor

The Temperature/Humidity sensor is designed to monitor the current temperature and humidity of an ambient environment. The reading of temperature/humidity can be reported on a regular basis. If the temperature/humidity reach set points, the sensor will send alerts to associated devices for further execution. Since sudden temperature/humidity change may cause health problems to people such as elderly or very young children, temperature/humidity sensors provide the most up-to-date temperature and humidity reading for you to maintain your family's health. When located in high humidity areas such as bathrooms, the sensor can trigger devices such as extraction fans to protect your homes interiors from excessive moisture.

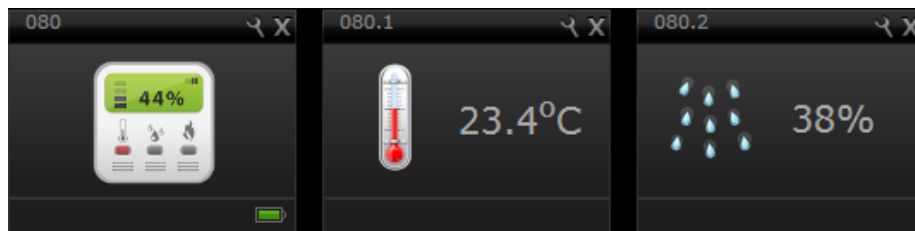


Figure 4.17: Temperature & Humidity Sensor icons

4.5.1 Specifications

- Communication protocol: Z-WAVE
- Operating frequency: 868,42 MHz
- Temperature range: from -10°C to $+50^{\circ}\text{C}$

- Humidity range: from 20% to 90%
- Unit of temperature: 105 °C / 105 °F
- Power supply: 3x1,5V batteries
- Z-Wave communication range: up to 30m indoors

4.5.2 Everspring Temp./Humidity sensor Inclusion/Exclusion

After setting the HC2 to learning mode (Chapter 5) triple-click "105 °C 105 °F / L" button on the sensor's body. The same sequence must be performed to exclude the device from Z-Wave network.

NOTE *ST814 Temp./Humidity sensor is presented in Home Center 2 interface as three separate devices - sensor module, temperature sensor and humidity sensor (see fig. 4.17)*

4.6 Door / Window Sensor



Figure 4.18: Door / Window Sensor

The Aeon Labs D/W Sensor is a battery-powered Z-Wave magnetic door/window sensor. The D/W sensor will send radio signals up to 6 associated Z-Wave devices within its own Z-Wave network when the main unit separates from the smaller magnetic unit. Bidirectional mounting plate and push button allows for easy end-user installation. The Aeon Labs D/W Sensor also has tamper prevention and low-battery alerts.

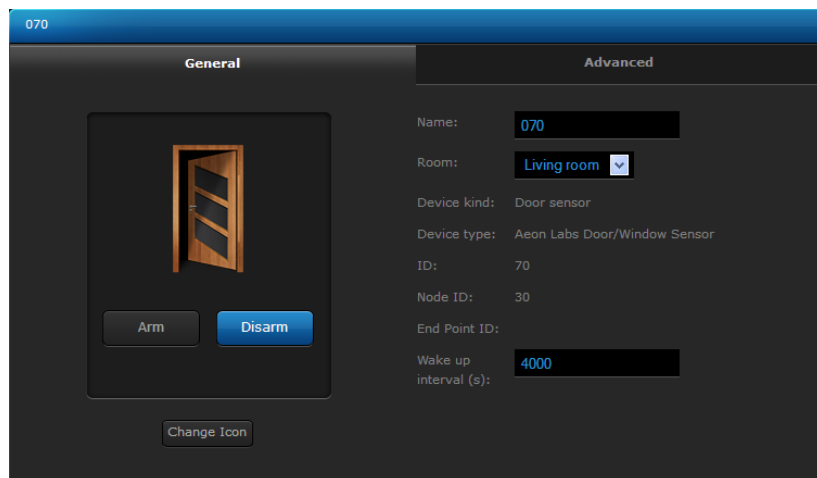


Figure 4.19: Door / Window Sensor Configuration Window

D/W Sensor's configuration window (HC2 interface) shows following parameters:

- *Devices name*
- *Room* - Parameter available from the list of rooms created (see 5.3 for detailed description)
- *Device kind*

- *Device type*
- *ID* - Device number
- *Node ID* - Unique devices number within Z-Wave network
- *EndPointID* - Multichannel devices number
- *Wake up interval* - Time interval for HC2 to communicate with the Flood Detector.

4.6.1 Specifications

- Radio protocol : Z-WAVE
- Frequency: 868,42 MHz
- Z-Wave communication range: Up to 30m indoors
- Dimensions (L x W x H) - 20 x 34 x 79 mm (main body).

4.6.2 Aeon Labs D/W Sensor Inclusion/Exclusion

After setting the HC2 to learning mode (Chapter 5) triple-click the tamper button on the sensor's main body. The same sequence must be performed to exclude the device from the Z-Wave network.

4.7 Smoke Detector



Figure 4.20: Smoke Sensor

The sensor is designed to detect smoke that comes into the sensor chamber. It does not detect gas, heat, or flame. The working principle is when the smoke sensor detects a certain density of smoke, the siren of the smoke sensor will sound and the sensor will emit signals to the associated devices for further execution. It can provide precious time for you and your family to escape before a fire spreads.

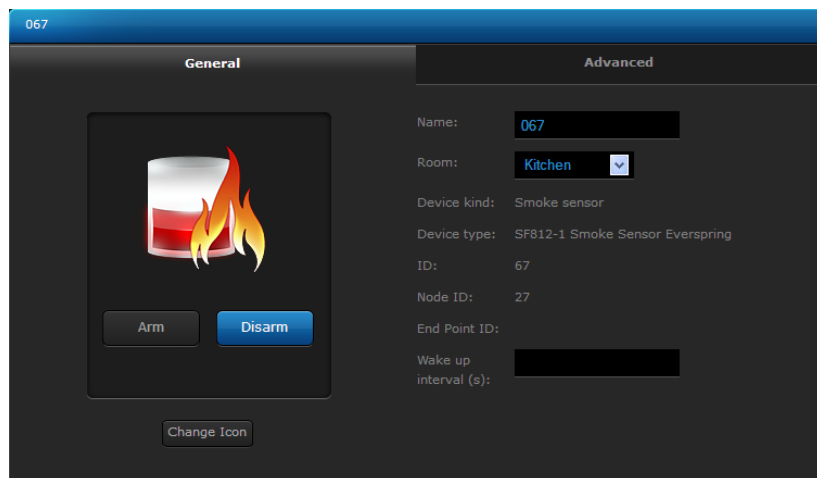


Figure 4.21: Smoke Sensor Configuration Window

Smoke Detector's configuration window (HC2 interface) shows following parameters:

- *Devices name*
- *Room* - Parameter available from the list of rooms created (see 5.3 for detailed description)

- *Device kind*
- *Device type*
- *ID* - Device number
- *Node ID* - Unique devices number within Z-Wave network
- *EndPointID* - Multichannel devices number
- *Wake up interval* - Time interval for HC2 to communicate with the Flood Detector.

4.7.1 Specifications

- Z-Wave device type: slave
- Sensor type: photoelectric smoke sensor
- Estimated battery life: 1 year
- Power: 9V
- Low battery warning
- Test button
- Warning sound: yes, 85dB

4.7.2 Smoke Sensor Inclusion/Exclusion

After setting the HC2 to learning mode (Chapter 5) triple-click "binding" button located inside the sensor's main body. The same sequence must be performed to exclude the device from the Z-Wave network.

Chapter 5

Home Center 2

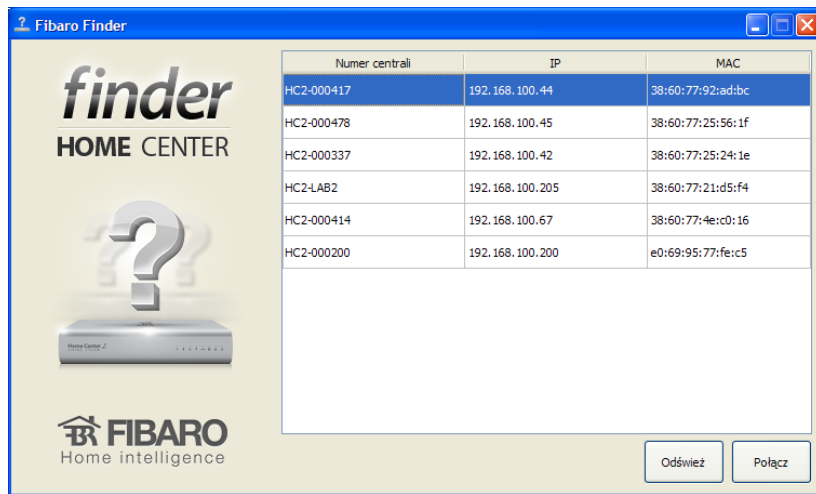


The Home Center 2 is an electronic device which manages the Fibaro System. The HC2 communicates with the system components (sensors, Fibaro modules) located in user's house using wireless radio communication. The Home Center 2 contains certified Z-Wave communication module allowing for support of up to 230 devices, integrated within a Mesh network. The Home Center 2 uses a simple, user friendly interface for the Fibaro system. The device enables it's user to manage and control the house using any mobile or stationery device, with internet access, from anywhere in the world.

5.1 HC2 Finder

In a typical configuration, the Home Center 2 should be connected directly to a router. This way the DHCP server will set the HC2 a dedicated dynamic IP. For the greatest ease of use we have provided designated software, the Home Center Finder, so that the user can find his/her HC2 IP within the local network. Home

Center Finder scans the local network and displays the IP and MAC addresses of all available HC2 units.



5.2 Your House

Your house tab is the Home Center 2 interface main window. It displays all devices available within a given Fibaro System, such as modules, sensors and virtual devices. Elements are divided into groups, depending on the device type and location in certain room.



Figure 5.1: Your Home tab

5.3 Rooms

The *Rooms* tab is designed for adding rooms and sections, i.e. single rooms, room groups, floors, or any user-defined locations. To add a section, first enter its name and click Add. The new section will be created and its name will be displayed on left-hand list. After a new section has been created, new room within the section may be created. To do so, the room name must be entered, the desired section chosen, and the "Add" button clicked.



Add Section and rooms

	<p>To Add Sections and Rooms</p> <p>To add a section, type in section name and click ADD. The new section will appear on the list on the left. After adding a section, you may assign rooms to it. Type in a room name, then choose the section you would like to assign it to and click ADD.</p>
	<p>Add Section</p> <p><input style="width: 80%;" type="text" value="Section Name"/> <input type="button" value="Add"/></p> <p><small>Left: 20 signs</small></p>
	<p>Add Room</p> <p><input style="width: 80%;" type="text" value="Room Name"/> <input type="button" value="First floor"/> <input type="button" value="Add"/></p> <p><small>Left: 20 signs</small></p>

Figure 5.2: Adding Rooms / Sections Window

5.4 Devices

5.4.1 Z-Wave Devices Inclusion

The *Devices* tab enables management of devices included in the Fibaro System. Devices are Fibaro modules, Fibaro system compatible sensors, IP cameras and virtual devices. To add a Z-Wave device click Add. Once the system sets itself into learning mode, Perform the tasks described in the manuals (see chapters 3 and 4).

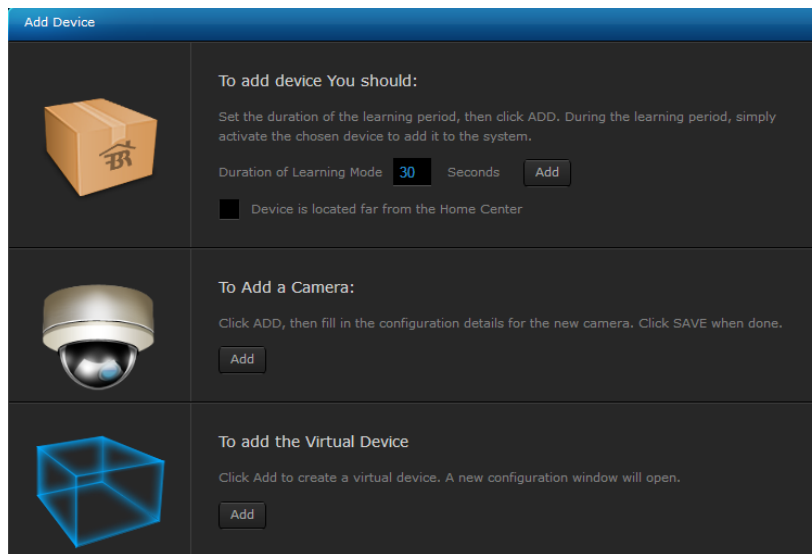


Figure 5.3: Adding Devices Window

5.4.2 IP Camera Inclusion

To add new IP camera, click Add. A new window will pop up, in which all camera configuration options will be available. After completing the camera configuration, click Save on the top of the screen.

When including new IP camera, following options need to be configured:

- Camera name
- Room in which the camera will be presented in the interface
- Camera model - May be picked from the list
- Camera access - User's login and password
- IP Address of the camera

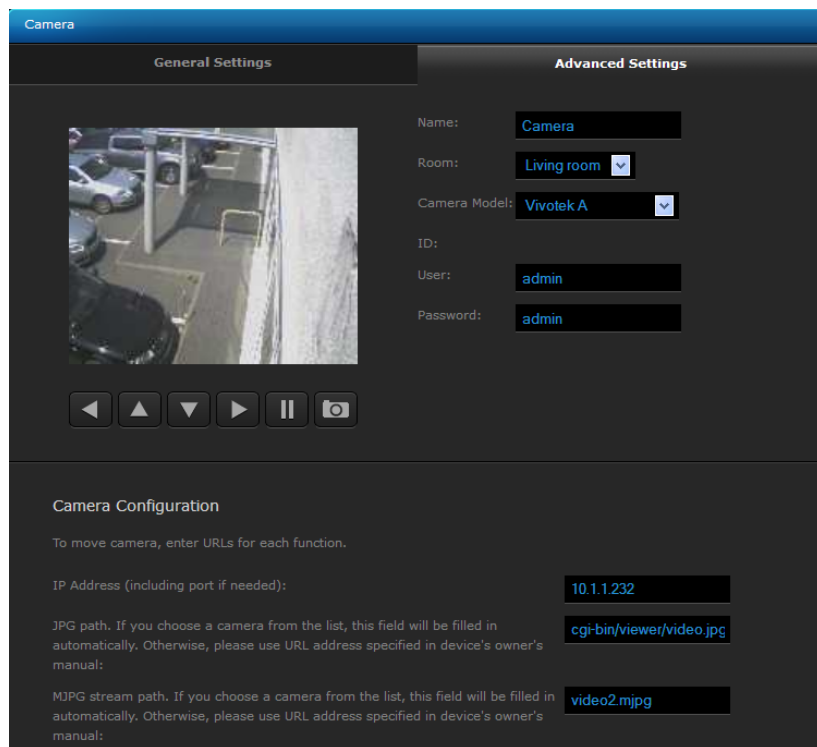


Figure 5.4: Adding IP Camera window

- JPG path - JPG picture is used in remote access. All the necessary information should be available in the camera's user manual
- MJPG path - MJPG stream path is used in local access.
- If the camera can be rotated - paths for each movement direction (specified in camera's user manual)

5.4.3 Creating Virtual Devices

Virtual devices were designed to control complicated devices such as boilers, air conditioning units and home appliances (kitchen, audio and video appliances). These kinds of devices may be managed through multiple component communication protocol, and the use of RS232 and Ethernet ports. The Fibaro System makes it possible to create new device types and create designated communication protocols.

Managing virtual devices is performed with TCP/IP protocols - Target IP and TCP communication ports must be defined.

Next, the user defines a designated button, and defines the communication to be sent after the button is used. The system supports *string* communicates

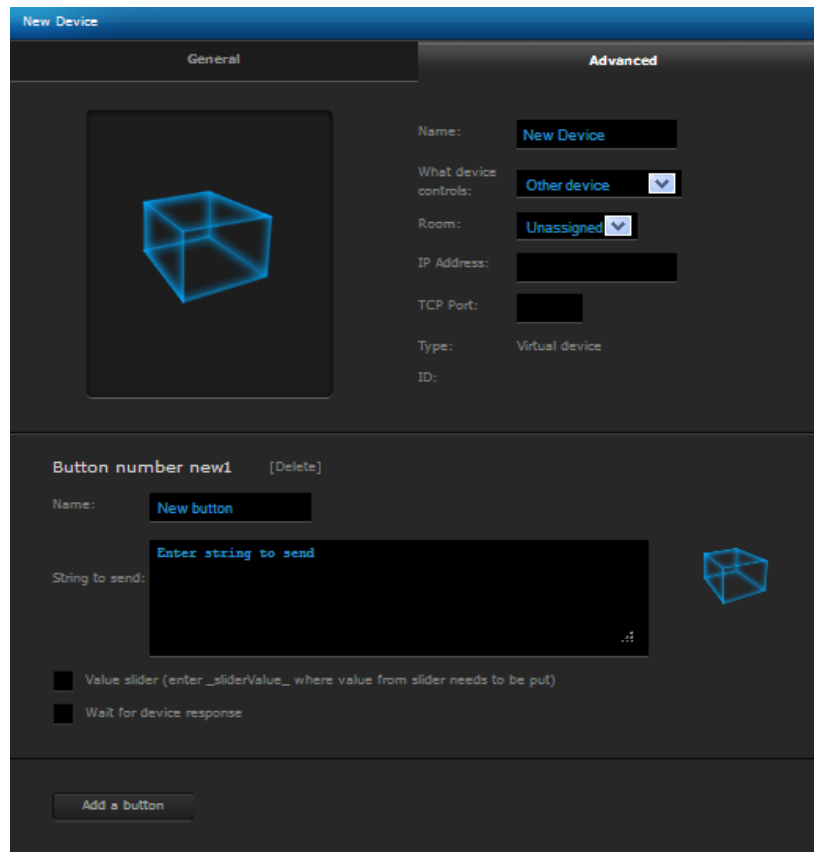


Figure 5.5: Adding Virtual Device Window

(text data type). For example, turn ON command line for Toshiba projector will be as follows:

```
GET /cgi-bin/webrc.cgi?P_ON=OK HTTP/1.10x0D0x0A0x0D0x0A
```

Another option is to create "value slider".

****NOTE** If the device confirm communication receipt please choose "wait for device's response" option*

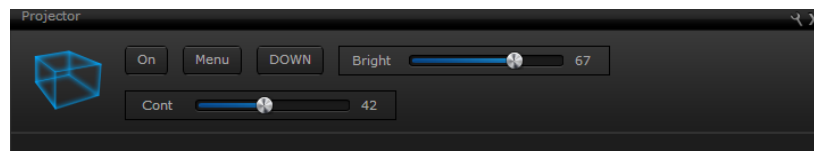


Figure 5.6: Virtual Device Example Icon

5.4.4 Deleting Devices

To delete device, simply click Delete. Device may be successfully deleted after the HC2 enters the learning mode (please refer to Chapters 3 and 4).

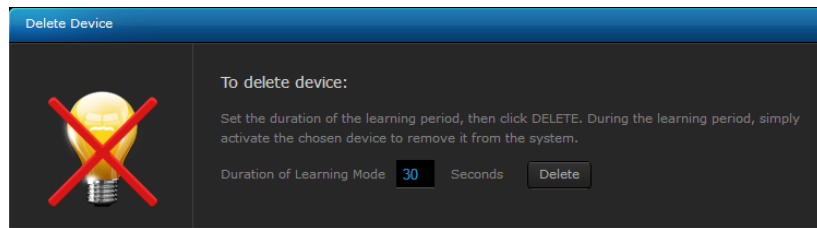


Figure 5.7: Deleting Device Window

5.5 Scenes

The *Scenes* tab lets the user program complicated functions between multiple devices included in the system. Scenes may be initiated by weather condition, a series of intuitive timers or various sensor/module state.



A Scene is a group of commands sent to user defined group of devices, e.g. "open the blinds 50%; and set the lights to 30% brightness". Scenes may be triggered by clicking the "Run scene" button. Scene may be also triggered by user defined actions, e.g. "run the scene if the motion sensor is tripped or the room temperature exceeds 27 degrees". Another option is to define the scene triggering timers, e.g. "run the scene each day at 8:30, and on Monday at 12:15".

To open a new scene window click Add. The new scene must be named and assigned to certain room for easier configuration. After general parameters have been set, The Scene "Advanced" tab should be opened. This is the tab in which the scene actions are programmed.

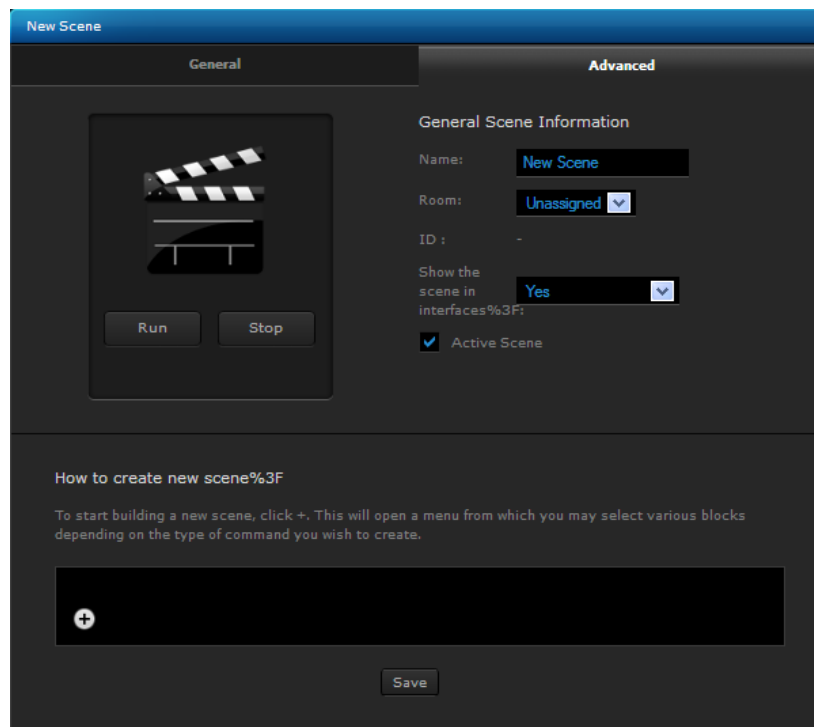
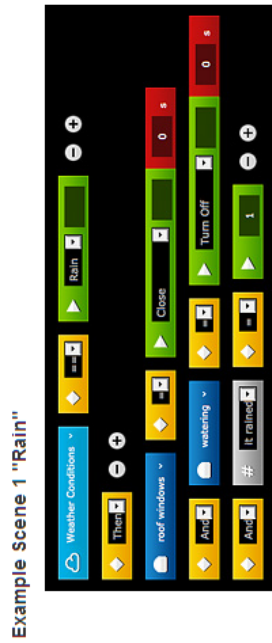


Figure 5.8: New Scene Creation Window

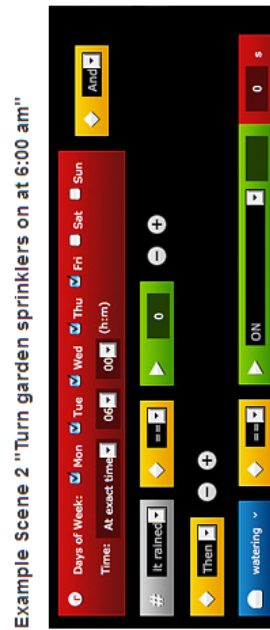
5.5.1 Example Scenes



If raining:
 - close roof windows,
 - turn garden sprinklers OFF,
 - set "it_rained" variable to 1.



If "it_rained" and 12 hours passed from that time:
 - set "it_rained" variable value to 0.



Each day at 6:00 am check if "it_rained" (user defined variable).
 If not ("it_rained" variable = 0) - turn the sprinklers ON.

5.6 Linked Devices

Linked Devices combine several devices into one device. Using this function will result in controlling the group of related devices as if they were one single device. The group will be presented in the HC2 interface as a single device.

The Home Center 2 offers four different Linked Devices panels:

- Heating
- Air Conditioning
- Humidity
- Video gate

5.6.1 Linked Devices - Heating

Heating linked devices was designed to enable link between Relay Switch module and temperature sensor. This linked may be used in control of boilers, floor heating, jacuzzis, swimming pools etc. After creating the linked devices, managing and scheduling is done by the use of Heating Panel.



Configuration

Choose the Master Device, for example - Sensor and Slave Devices, for example - Relay Switches

Main Device

Choose Master Device - for example 1-st floor Temperature Sensor, or Heating Zone number 1 temp. sensor.

Choose Sensor:

Switch 1

Switch responsible for turning on/off heating in a Zone.

Choose Switch:

Figure 5.9: Linked Devices Heating Window

5.6.2 Linked Devices - Air Conditioning

Air conditioning linked devices are based on the same principle as Heating Linked Devices. It is possible to add multiple switches turning several air conditioning devices ON / OFF, so that air conditioning in multiple rooms or sections may be operated as a single device. After air conditioning linked devices has been created, managing and scheduling is done by the use of the Air Conditioning panel.



Configuration

Choose the Master Device, for example - Sensor and Slave Devices, for example - Relay Switches

Main Device

Choose Master Device - for example 1-st floor Temperature Sensor, or Heating Zone number 1 temp. sensor.

Choose Sensor:

Switch 1

Switch responsible for turning on/off heating in a Zone.

Choose Switch:

Figure 5.10: Linked Devices Air Conditioning Window

5.6.3 Linked Devices - Humidity

Humidity linked devices uses the principle described in 5.6.1/2. After Humidity linked devices have been created, managing and scheduling of the new devices is done through the Humidity Panel.



Configuration

Choose the Master Device, for example - Sensor and Slave Devices, for example - Relay Switches

Main Device

Choose Master Device - for example 1-st floor Temperature Sensor, or Heating Zone number 1 temp. sensor.

Choose Sensor:

Switch 1

Switch responsible for turning on/off heating in a Zone.

Choose Switch:

Figure 5.11: Linked Devices humidity window

5.6.4 Video Gate

The Video gate is a link between three devices - an IP camera, the module responsible for opening the gate and the module responsible for triggering the doorbell. After the link has been created, the video gate may be controlled via an iPhone. To create the video gate, three devices must be added to the link: an IP camera overlooking the gate, a Relay Switch used to open the gate and a Relay Switch connected to the doorbell.



Video gate configuration
Choose camera for video gate. Optionally choose module opening the gate and bell module

Camera
Choose the camera monitoring the gate

Choose camera:

Output to open the gate
Output to open the gate

Choose Switch:

Input for bell push
Input for bell push

Choose Switch:

Figure 5.12: Linked Devices Video-gate Window

5.7 Panels

Panels simplify managing groups of related devices serving the same functionality, such as heating, air conditioning, or watering the garden. Using Panels, you can easily program the devices' schedule for the entire week.



5.7.1 SMS Panel

SMS Home Management is available in selected countries and allows you to stay in control of your home even when you don't have a viable internet connection. SMS Panel lets you define SMS communications sent by the system, define the list of telephone numbers allowed to manage the house and top-up the return messages account, used for the confirmation messages sent from sensors etc.

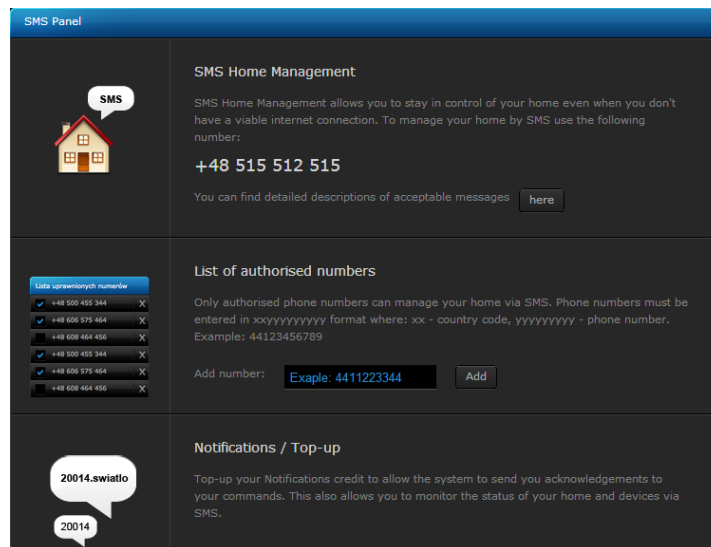


Figure 5.13: SMS Panel window

Example messages:

- `HC2-000417.lights.livingroom.on` -turns on all the lights in livingroom.
- `HC2-000417.lights.livingroom.off` - turns off all the lights in livingroom.
- `HC2-000417.lights.house.status` - sends the message informing of the status of all devices named "light" in the house. If, for example in the living room any light is on, an excerpt from the return message will appear as follows: `livingroom: on`. If all of the lights in the room are off, excerpt

from a return message will appear as follows: `livingroom: off`. To use the functionality, return messages pool must be bought.

5.7.2 Alarm Panel

The Alarm Panel is designed to manage the alarm control unit, integrated into the Fibaro System. The alarm central unit is integrated with the use of two Relay Switch 2x1,5kW modules.



In the Alarm Panel, the following devices need to be present:

- *Controlling Module* - arming / disarming alarm
- *Status Module* - informing about zone status (armed / disarmed)
- *Alarming Module* - indicating armed zone breach

The defined alarm will be presented in the Your House menu.

Alarm Panel

Add Zone

Controlling Module - arming / disarming alarm
 Status Module - informing about zone status (armed / disarmed)
 Alarming Module - indicating armed zone breach

Name the Zone

Main Alarm Add

Zones List

Name the Zone	Controlling	Status	Alarming	
Main Alarm	Switch 1 ▾	Switch 2 ▾	Switch 3 ▾	Delete

PIN codes

User: admin

Zone Name	old PIN	new PIN	confirm new PIN	button
the whole house	-	-	-	Add

Figure 5.14: Alarm Panel

Alarm Integration

For integrating the alarm system into Fibaro System, two Relay Switch 2x1,5kW modules may be used.

- Connect Arming/Disarming input of the alarm control unit to **O1** and **O2** of the first Relay Switch 2x1,5kW
- Connect Status, i.e. Armed / Disarmed output of the alarm control unit to **S1** and **S2** inputs of the first Relay Switch 2x1,5kW
- connect alarming input of the alarm control unit (Breach / No Breach) to outputs *O1* and **O2** of the second Relay Switch 2x1,5kW

5.7.3 Heating Panel

The Heating Panel allows you to schedule heating programs at predetermined times. After the heating zones have been created and rooms are added to it, all devices responsible for maintaining the desired temperature will work in accordance with schedule.



Home

Mon Tue Wed Thu Fri Sat Sun

Part of Day	From	Temperature
Morning	06 : 00	none °C
Day	12 : 00	none °C
Evening	18 : 00	none °C
Night	00 : 00	none °C

Use also for: Tue Wed Thu Fri Sat Sun

Manual Mode

Temperature: none For: 0h

Dom

Turn On Turn Off

Holiday Mode

Temperature: none

Dom

Turn On Turn Off

Add zone for heating

Combine several rooms into one zone to make them quicker and easier to manage. Type in a zone name and click ADD to create a zone. To add rooms, click the zone's settings icon in the list on the left. Click SAVE when done.

Type in Zone Name Add

Figure 5.15: Heating panel window

5.7.4 Heating Panel

The Cooling Panel allows you to schedule cooling programs at predetermined times. After the cooling zones have been created and rooms are added to it, all devices responsible for maintaining the desired temperature will work in accordance with schedule.



Home

Mon Tue Wed Thu Fri Sat Sun

Part of day	From	Temperature
Morning	06 : 00	none °C
Day	12 : 00	none °C
Evening	18 : 00	none °C
Night	00 : 00	none °C

Use also for: Tue Wed Thu Fri Sat Sun

Manual Mode

Temperature: none For: 0h

Turn On Turn Off

Holiday Mode

Temperature: none

Turn On Turn Off

Add Zone for Air Conditioning

Combine several rooms into one zone to manage them quickly and easily. Type in zone name and click 'Add' to select room you want to add to the zone. Confirm your choice.

Type in Zone Name Add

Figure 5.16: Air Conditioning panel window

5.7.5 Humidity Panel

The Humidity Panel allows you to schedule cooling programs at predetermined times. After the cooling zones have been created and rooms are added to it, all devices responsible for maintaining the desired temperature will work in accordance with schedule.

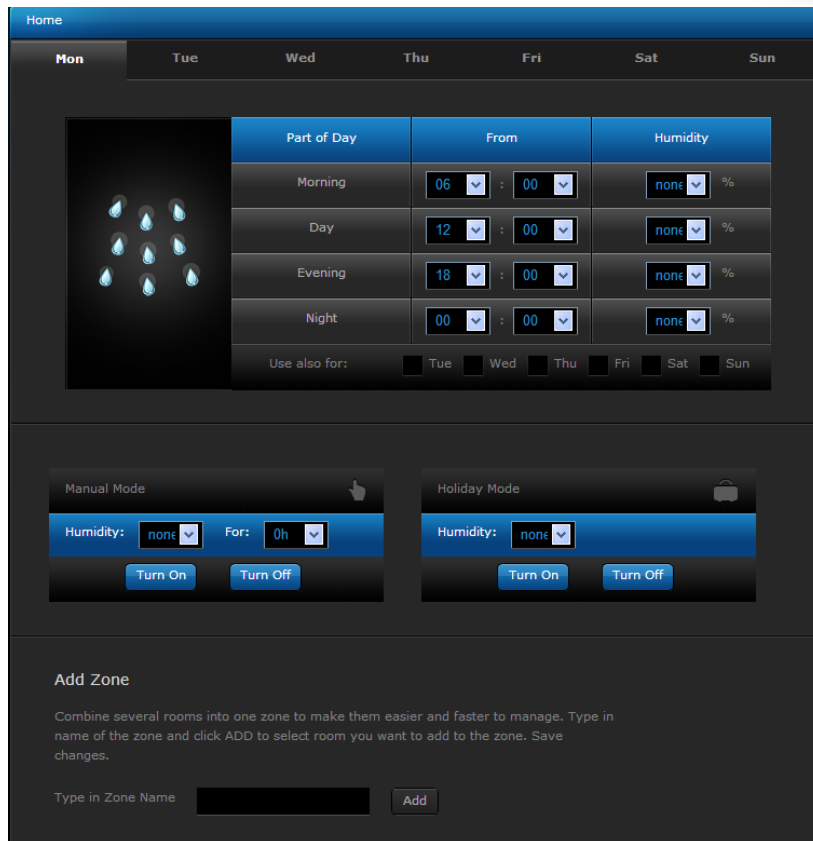


Figure 5.17: Humidity panel window

5.7.6 History Panel

The History Panel is a register of all of the activities taking place in a given Fibaro System. The panel lets the user monitor changes in status of all devices and filter them depending on the time they occurred.

5.7.7 Access Control

The Users Panel is configured to manage the accounts of the users of a certain HC2 unit. It allows you to grant/block access to the devices, e.g. cameras; scenes and system settings. From the Users Panel it is also possible to grant/block access using the hotel mode for a given mobile application, or set a period for reporting GPS locations from a certain iPhone device. Also, the Users Panel gives an option to define mobile devices which will receive Push Notifications.

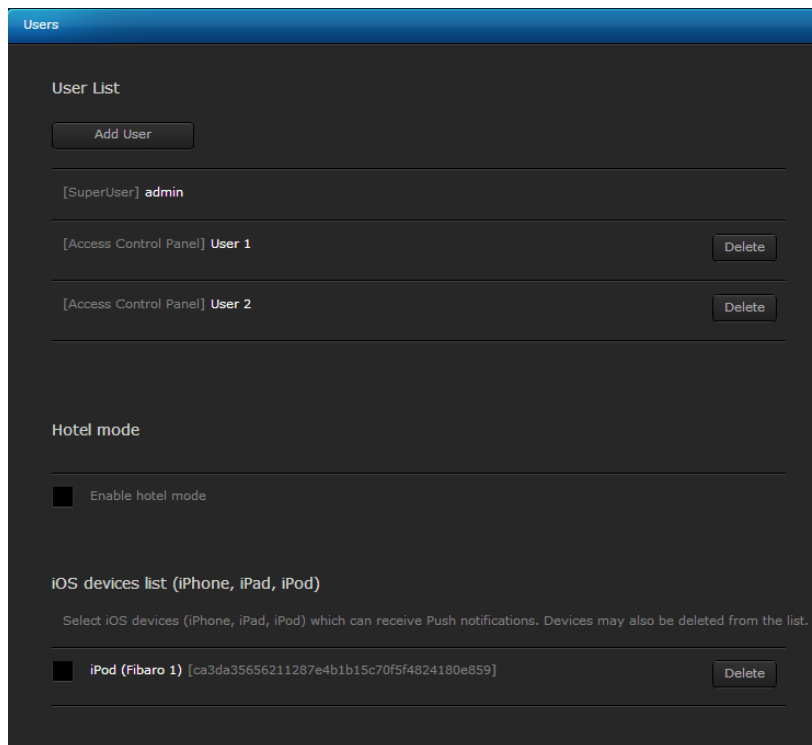


Figure 5.18: Access Control Panel

After clicking the user's name, the Users Panel shows the window shown in fig 5.19.

- Login
- Password (at least 4 characters. The system will ask for password confirmation)
- E-mail address (all notifications will be sent to this e-mail)
- If the user is receive the notification messages

The screenshot shows a 'User List' configuration window. At the top, there is an 'Add User' button. Below it, the user name '[SuperUser] admin' is displayed. The configuration fields are as follows:

- Login:** admin
- Password:** [Redacted]
- Confirm Password:** [Redacted]
- e-mail:** support@fibaro.com
- Notifications:** A checked checkbox labeled 'Shall Fibaro send notifications?'
- Tracking:** A dropdown menu labeled 'Shall Fibaro track the user?' with the value '1 min.'
- Hotel Mode:** A dropdown menu labeled 'Room in a hotel mode' with the value 'All rooms'

Figure 5.19: User configuration window

- If the user is to be tracked - how frequently GPS position from the user's iPhone will be collected. The shorter collection time, the more frequent readouts, resulting in more accurate positioning.
- Hotel mode - which rooms should be included in hotel mode for the user

Hotel Mode

Hotel mode is designed for defining a single room, that a given user will be able to manage through the iPhone interface. For example, if there is *USER 1* in the system, and the room *ROOM 1* assigned to the user, the person will be able to manage this single room only through his iPhone application.

Users Rights Management

Users Panel gives the possibility for advanced control over users rights. It is possible to grant or block an access to:

- Devices - rights to operate certain devices
- Cameras - rights to check the image from certain IP cameras

- Scenes - rights to use certain scenes
- System - rights to manage certain system sections

List of iOS devices

This enables you to determine which of the users using iOS applications are to receive Push notifications. If the user is allowed to remotely access to the system, his iPhone must be marked on the list.

5.7.8 Notifications Panel

Notifications panel gives the ability to create messages to be used for informing the user of certain events taking place in the house.

A screenshot of the 'Notifications' configuration panel. The panel has a dark blue header with the title 'Notifications'. Below the header, there is a section titled 'Notification' with a descriptive text: 'Create a message describing a device's status. You can configure the message to be sent whenever the device changes state, or when it reaches a predetermined state.' The main configuration area contains three rows, each with a label on the left and a text input field on the right. The first row is labeled 'Title' and contains the text 'Motion sensor'. The second row is labeled 'SMS Content' and contains the text 'Motion sensor was breached'. The third row is labeled 'e-mail Content' and contains the text 'Motion sensor was breached'. Below these rows, there is a 'Push content' label and a text input field containing 'Motion sensor was breached'. At the bottom center of the panel is a 'Save' button.

Figure 5.20: Notification Panel

5.7.9 Localization Panel

Localization Panel uses user defined GPS points to activate GPS scenes. There are two ways of defining GPS points - choosing on a map, or entering certain GPS coordinates. Each user may enter indefinite number of GPS points.

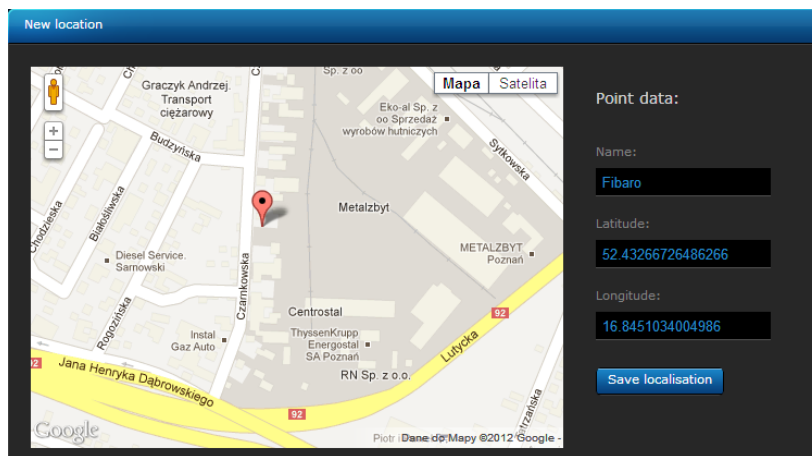


Figure 5.21: Localization Panel

Usage example: *USER 1* defines two *GPS* points *HOME* and *WORK*. Now it is possible to create scene turning *OFF* all the lights in the house once the user leaves the *HOME* location, and arms the alarm at home once the user enters *WORK* location.

5.8 Configuration

The Home Center 2 configuration options are divided into the following categories:

- General
- LAN settings
- Location
- Backup



5.8.1 General

Basic information about the Home Center 2, including:

- Serial no.
- MAC address
- Current software version
- Z-Wave chip software version
- Time and date last software update was performed
- Time and date last system backup file was created
- Server status

General information window also allows for performing following actions:

- Restart - Home Center 2 soft restart, i.e. system shut down and started again
- Z-Wave network reset - All of the system devices will be removed from HC2 Z-Wave chip memory, i.e. all of the device will have to be re-added to the system
- Default settings - Home Center 2 memory is reset to factory state, i.e. all of the devices are deleted together with their settings and dependencies (scenes). HC2 software is downgraded to it's oldest available version. After resetting to defaults, the HC2 software needs to be upgraded to latest available version.



Figure 5.22: Configuration Panel - General

5.8.2 LAN Settings

There are two basic options available: DHCP or Static IP.

Following parameters may be defined:

- Home Center 2 IP address
- Subnet mask
- Default gateway IP, used by HC2 to connect the web
- DNS server address
- Remote access enabling

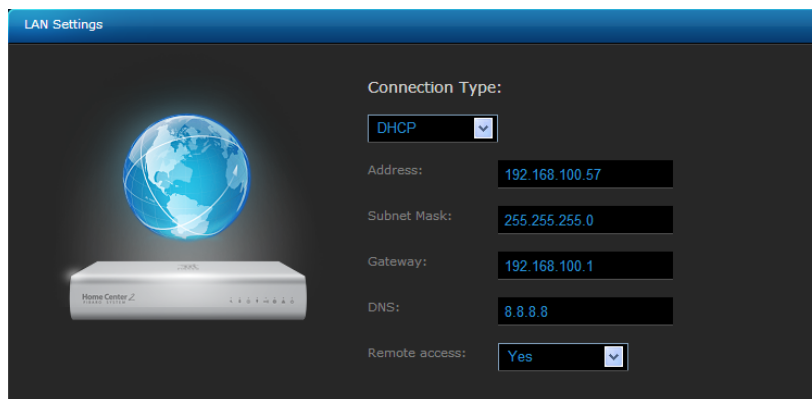


Figure 5.23: Configuration Panel - LAN settings

Important information on LAN settings

By default, the HC2 expects to be connected to a DHCP server. In this mode, HC2 IP address may be obtained with the use of the HC2 Finder (see *HC2 Finder*). Another option is to set Static IP. Static IP may be set from the LAN settings tab, or manually, by holding the Recovery button (back side of the HC2 casing) after the device has been connected to power supply. In this case, the HC2 will have following settings:

- IP Address: 192.168.81.1
- Subnet Mask: 255.255.255.0
- Gateway address: 192.168.81.1

When static IP has been set, it is possible to connect HC2 directly to Ethernet port of a PC, however PC network settings must be set to match those of HC2:

- PC/MAC IP: 192.168.81.5
- Subnet mask:: 255.255.255.0
- Gateway address: 192.168.81.1

NOTICE *After setting a static IP for the HC2 by pressing and holding the Recovery button, please enter LAN settings to change connection type to DHCP, when the HC2 is connected to the PC.*

5.8.3 Location

Location settings include time zone location, within which HC2 is installed. Additionally, it is possible to enter the longitude and latitude used for monitoring weather conditions (also used in scenes).

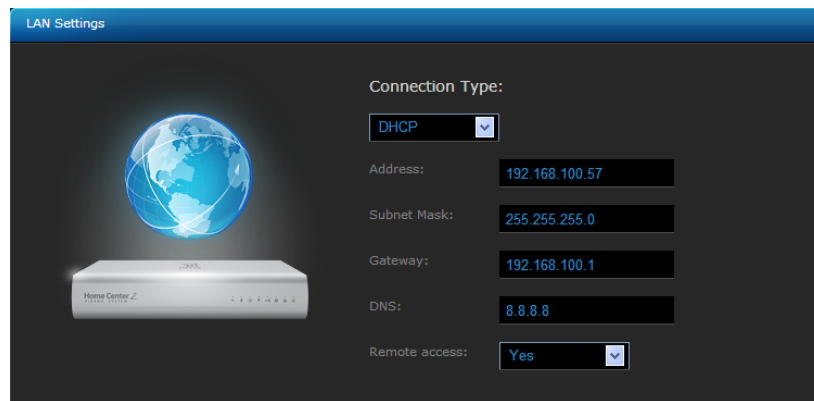


Figure 5.24: Configuration Panel - Location info

5.8.4 Backup

In this section the list of created backup files is displayed. Backup file is a copy of a file containing the information's about all devices added to the system and all of their settings, users individual settings and the HC2 operating system. Retrieving data from backup file means going back to all of the systems settings that had been saved.

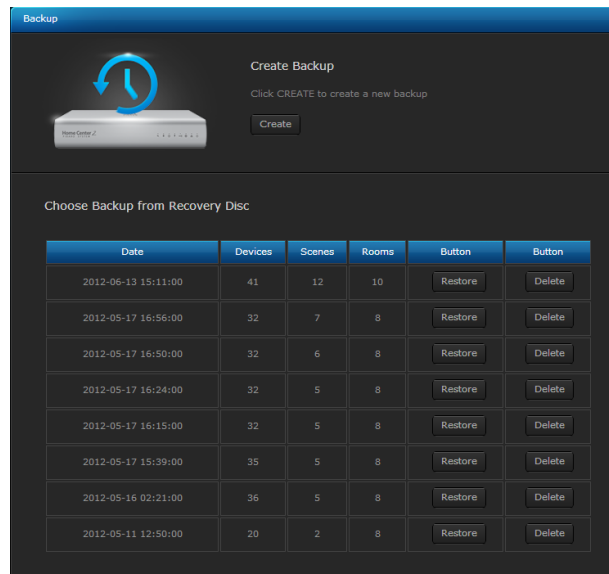


Figure 5.25: Configuration Panel - Backup Creation Window

5.9 Recovery Mode

Recovery Mode is a special panel, designed for retrieving the HC2 operating system in case of technical problems, e.g. when it is not possible to log into the user's panel. Using recovery mode the Home Center 2 will be brought back to the factory installed software version, i.e. 1.009. To access Recovery mode:

1. Turn the Home Center 2 OFF
2. When turning the Home Center 2 ON again, hold Recovery button in the back of HC2 casing - diodes will turn ON sequentially, starting from the left hand side
3. Entering Recovery Mode is signaled with a control diode

NOTE! if you press and hold the recovery button for too long, the HC2 will set to static IP and network connection will be lost (see 5.8.2)



Figure 5.26: Recovery Mode View

The left hand menu displays the following information:

- *Recovery version*
- *HC2 serial no*
- *IP Address* - IP address, visible in local network
- *MAC address* - Module name and software version

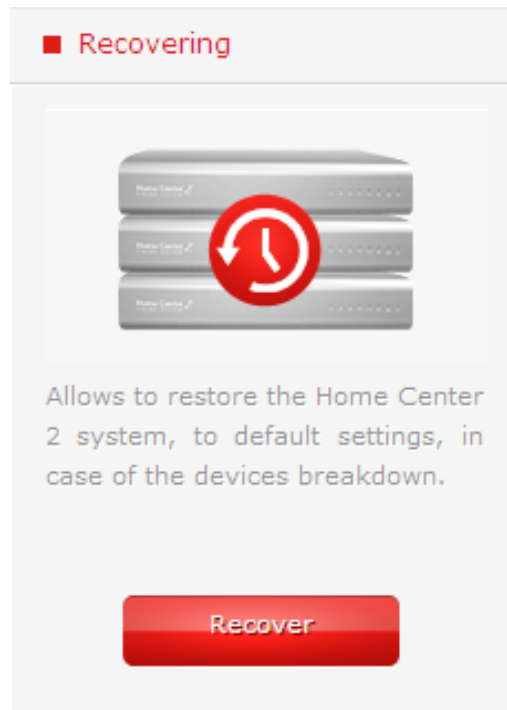


Figure 5.27: Recovery Mode - retrieving from backup

- *Last backup* - The date and time when last backup file was created
- *Devices* - The Number of devices saved in last backup file
- *Rooms* - The Number of rooms saved in last backup
- *Scenes* - The Number of scenes saved in last backup file
- *Online* - The HC2 internet access

List of Figures

3.1	Dimmer module, FGD-211	7
3.2	Dimmers Configuration Window	9
3.3	Dimmer wiring diagram	13
3.4	Dimmer wiring diagram - 2-wire connection	14
3.5	Dimmer wiring diagram - 3-wire connection	14
3.6	Dimmer wiring diagram - 3 way connection	15
3.7	Dimmer wiring diagram - 4-way connection	15
3.8	Relay Switch 2x1,5kW module, FGS-221	16
3.9	Relay Switch 2x1,5kW configuration window	17
3.10	Single switch, Relay Switch 2x1,5kW connection diagram	20
3.11	Single switch with an alternative power supply for the load	21
3.12	Double switch, Relay Switch 2x1,5kW connection diagram	21
3.13	Double switch with an alternative power supply for the load	22
3.14	Relay Switch 1x3kW module, FGS-211	23
3.15	Relay Switch 1x3kW Configuration Window	24
3.16	Single switch, Relay Switch 1x3kW wiring diagram	27
3.17	Single switch with an alternative power supply for the load	27
3.18	Double switch, Relay Switch 1x3kW wiring diagram	28
3.19	Double switch with an alternative power supply for the load	28
3.20	Roller Shutter module. FGR-221	29
3.21	Roller Shutter configuration window	30
3.22	Wiring diagram - Roller Shutter	32
3.23	Bypass module, FGB-001	33
3.24	Wiring diagram - Bypass	34
4.1	Universal Binary Sensor - Icons Views	36
4.2	Universal Binary Sensor - connections description	41
4.3	Universal Binary Sensor, standard alarm line	41
4.4	Universal Binary Sensor, parametric alarm line	42

4.5	DS18B20 temperature sensors connection diagram	42
4.6	DS18B20 connections description	42
4.7	Universal Binary Sensor connection diagram	43
4.8	Electronic Thermostat Danfoss Living Connect	44
4.9	Danfoss Thermostat - Parameters Modification Window	44
4.10	Danfoss Electronic Thermostat - configuration window	45
4.11	Danfoss Thermostat - available adapters	47
4.12	Motion Sensor	48
4.13	Motion Sensor Configuration Window	48
4.14	Flood Sensor	50
4.15	Flood Sensor Configuration Window	50
4.16	Temperature and Humidity Sensor	52
4.17	Temperature & Humidity Sensor icons	52
4.18	Door / Window Sensor	54
4.19	Door / Window Sensor Configuration Window	54
4.20	Smoke Sensor	56
4.21	Smoke Sensor Configuration Window	56
5.1	Your Home tab	61
5.2	Adding Rooms / Sections Window	62
5.3	Adding Devices Window	63
5.4	Adding IP Camera window	64
5.5	Adding Virtual Device Window	65
5.6	Virtual Device Example Icon	65
5.7	Deleting Device Window	66
5.8	New Scene Creation Window	67
5.9	Linked Devices Heating Window	70
5.10	Linked Devices Air Conditioning Window	71
5.11	Linked Devices humidity window	72
5.12	Linked Devices Video-gate Window	73
5.13	SMS Panel window	74
5.14	Alarm Panel	76
5.15	Heating panel window	78
5.16	Air Conditioning panel window	79
5.17	Humidity panel window	80
5.18	Access Control Panel	81
5.19	User configuration window	82
5.20	Notification Panel	84
5.21	Localization Panel	85
5.22	Configuration Panel - General	87
5.23	Configuration Panel - LAN settings	87
5.24	Configuration Panel - Location info	89

5.25 Configuration Panel - Backup Creation Window	90
5.26 Recovery Mode View	91
5.27 Recovery Mode - retrieving from backup	92