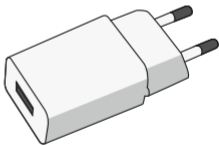
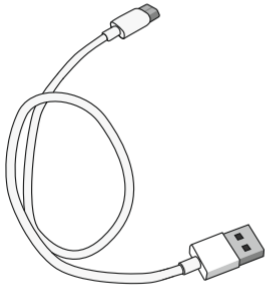
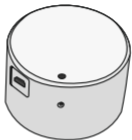


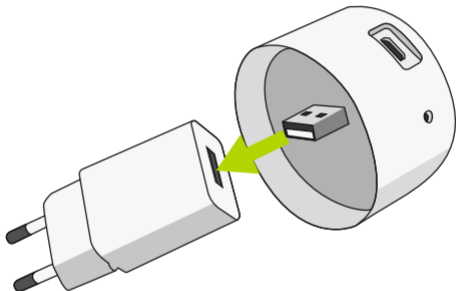


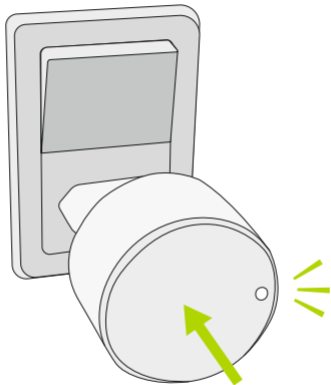
Danabridge V3



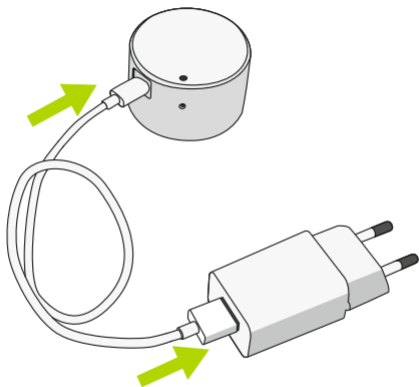


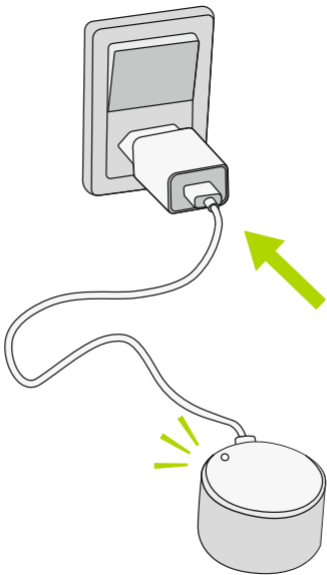
A





B





The following instructions are in english. Localized versions can be found with the QR-code below.



guide.danalog.com

Add the Danabridge V3 in the Danalock App

Open the Danalock App and add the Danabridge by selecting "Add device" in the menu tab. When the Danabridge has been enrolled you can pair it with your Danalock V3.

Go to:

Menu > My Accessory Devices > [Danabridge name] > Pairing

Select the lock you want to control with the Danabridge V3.

Connect the Danabridge V3 to wifi

Go to:

Menu > My Accessory Devices > [Danabridge name] > Wifi

Select your access point and enter the credentials. The Danabridge V3 is ready for use when it has connected successfully.

LED-Signals

The Danabridge V3 indicates the status of several operations with different colors:

LED signal	LED color	Status indication
Long white blink		Power on
Constant red light		Danabridge offline
Yellow blinking		Danabridge is not configured
Red blinking		Danabridge no server connection
Green blinking		Communication in progress
Constant blue light		Configuring Danabridge
Constant purple light		Firmware is being updated
Constant green light		Danabridge online

Click commands

Operation	Input action	LED response
Clear access point and settings	10 button clicks	Long red blink

Firmware upgrade

Go to:

Menu > My Accessory Devices > [Danabridge name] > Firmware

and press "Upgrade firmware". Make sure to keep your phone near the Danabridge V3 during the entire firmware upgrade process.



Danalock International ApS

Gammel Stillingvej 427C
8462 Harlev, DK

+45 4242 8122
info@danalock.com